

2014 PTE Buyers Guide

About This Directory

The 2014 *Power Transmission Engineering Buyers Guide* was compiled to provide you with a handy resource containing the contact information for significant suppliers of power transmission components.

Accessories..... Page 28
 Actuators Page 29
 Adjustable Speed Drives Page 30
 Bearings Page 32
 Belts & Belt Drives..... Page 34
 Brakes Page 35
 Chain & Chain Drives Page 36
 Clutches..... Page 36
 Controls..... Page 38
 Couplings and U-Joints Page 39
 Fluid Power..... Page 41
 Gear Drives Page 41
 Gear Manufacturing Services..... Page 42
 Gears Page 43
 Industrial Hardware and Machine Parts Page 45
 Linear Motion Devices Page 45
 Lubrication Page 46
 Motors..... Page 46
 Resources Page 47
 Seals..... Page 47
 Sensors..... Page 47
 Software..... Page 47
 A to Z Company Index..... Page 48

Bold Listings throughout the Buyers Guide indicate that a company has an advertisement in this issue of *Power Transmission Engineering*.

How to Get Listed in the Buyers Guide

Although every effort has been made to ensure that this Buyers Guide is as comprehensive, complete and accurate as possible, some companies may have been inadvertently omitted. If you'd like to add your company to the directory, we welcome you. Please visit www.powertransmission.com/getlisted.php to fill out a short form with your company information and Buyers Guide categories. These listings will appear online at www.powertransmission.com, and those listed online will automatically appear in next year's printed Buyers Guide.

Handy Online Resources

The *Power Transmission Engineering Buyers Guide* – The listings printed here are just the basics. Visit our online buyers guide for the most comprehensive directory of suppliers of gears, bearings, motors, clutches, couplings, gear drives and other mechanical power transmission components, broken down into sub-category by type of product manufactured:

www.powertransmission.com/directory/



The *Gear Industry Buyers Guide* – If you manufacture gears or need information on suppliers of machine tools, tooling and services for gear manufacturers, please visit the buyers guide on *Gear Technology's* website:

www.geartechnology.com/dir/

ACCESSORIES

ABL Products Incorporated
 AGI Automation Components
 AISCO Industrial Couplings
 ASI Technologies Inc.
 AST Bearings
 Accent Bearings Co. Inc.
 Ace World Companies
 Acorn Industrial Services
 Advanced Test & Automation Inc.
 Aerotech Inc.
 Akron Gear and Engineering
 All Metric Small Parts (aMsp)
 Amacoil, Inc.
 American Collars & Couplings, inc.
 American Plastics Depot
 Ameridrives Power Transmission
 Ametric / American Metric Corporation
 Area Distributors Inc.
 Ascent Precision Gear Corporation
 Ashutosh Power TransBelts Limited
 Atlanta Drive Systems Inc.
 Autoparts Solutions PvtLtd
 Axu S.r.l.
 B&B Manufacturing, Inc.
 BDI - Bearing Distributors Inc.
 BRECOflex CO., L.L.C.

Baldor Electric Company

5711 R.S. BOREHAM, JR. ST.
 P.O. BOX 2400
 FORT SMITH, AR 72901
Phone: (479) 646-4711
Fax: (479) 648-5792
www.baldor.com

SEE OUR AD
P21

Bearing Service Company
 Bearings Limited
 Beijing THC Limited
 Belcon Engineers P. Ltd.
 BellowsTech, LLC
 Best Parts Online
 Bevel Gears India Pvt. Ltd.
 Bibby Transmissions
 Bishop-Wisecarver Corp.
 Brevini Power Transmission - Canada
 Brewer Machine & Gear Co.
 CENTA Corp.
 CMS Vibration Solutions Ltd
 Calicut Engineering Works Limited
 Certified Reducer Rebuilders Inc
 Challenge Power Transmission (Aust) Pty Ltd
 Challenge Power Transmission PLC
 Collars and Coupling
 ComInTec Srl
 Conroll Corporation
 Core Supply LLC
 Cortec Corporation
 Cross + Morse
 Currie Enterprises
 Custom Gear & Machine Inc.
 Custom Machine & Tool Co. Inc.
 Cyclo-Index
 Daido Corporation of America
 Dalton Bearing Service, Inc.
 Danaher Motion and Thomson
 Darbar Belting
 Datasyst Engineering & Testing Services, Inc.
 Daubert Cromwell LLC
 Davall Gears Ltd.
 Del-Tron Precision Inc.
 Desch Canada Ltd.

Designatronics, Inc.

2101 JERICHO TURNPIKE, NEW HYDE PARK, NY 11040
Phone: (516) 328-3300
Fax: (516) 326-8827
info@designatronics.com
www.designatronics.com

SEE OUR AD
 BACK COVER
P34, 35,
40, 42, 45

Dn Sales Australia
 Drive Components LLC
 Drive Systems Technology Inc.
 Electro Steel Engineering Company
 Emerson Industrial Automation - Drives & Motor
 Emerson Power Transmission
 Equipment Concepts
 Fife Corporation
 Framo Morat Inc.
 GMB Associates
 Gajra Gears Pvt. Ltd.
 Gates Corporation
 Gayatri Gear Industries
 Gear Master Inc.
 Gleason K2 Plastics
 Great Northern Products Inc.
 HBM
 HEIDENHAIN Corporation
 Hangzhou Xingda Machinery Co. Ltd.
 Hayes Manufacturing Inc.
 Henan Contrust Gear Transmission Co., Ltd.
 Hi-Grade Inc.
 Hydraulic Problems ?, Inc.
 IBT, Inc

IDC-USA

933 WESTERN DRIVE, INDIANAPOLIS, IN 46241
Phone: (317) 244-9200
Fax: (317) 244-4600
sswaim@idc-usa.com
www.IDC-USA.com

SEE OUR AD
P29

ITW Heartland
 Industrial Jig & Fixture
 Industrial Pulley & Machine Co, Inc.
 Intech Corporation
 Intellidrives, Inc
 International Distribution Alliance, Inc. (IDA, In
 JVL Industri Elektronik A/S
 Jason Industrial Inc.
 K+S Services

KTR Corporation

122 ANCHOR ROAD, MICHIGAN CITY, IN 46360
Phone: (219) 872-9100
Fax: (219) 872-9150
ktr-us@ktr.com
www.ktr.com

SEE OUR AD
P39, 40

Kamar Industries
 Kbk Antriebstechnik Gmbh
 Kinefac Corporation
 Kluber Lubrication North America L.P.
 LM76 Linear Motion Bearings
 Lovejoy, Inc.
 MGT - Magnetic Gearing & Turbine Corp.
 MMB Bearing Co. Inc.
 MROSupply
 MT Tool & Manufacturing
 Magnum Manufacturing
 Magtrol, Inc.
 Maguire Technologies

Martin Sprocket & Gear

3100 SPROCKET DRIVE, ARLINGTON, TX 76015
Phone: (817) 258-3000
Fax: (817) 258-3333
mail@martinsprocket.com
www.martinsprocket.com

SEE OUR AD
P31

Maurey Manufacturing Corporation

Micronor Inc.
 Ming Chang Traffic Parts Mfg.
 Mini-Broach Machine Company
 Minsk Gear Works
 Motion Industries
 Moventas Ltd.
 NDE Power Transmissions
 Netshape Technologies, Inc.
 New England Belting Company
 North American Clutch Corp. (noram)
 Norwin Electronics Limited
 Novotec Argentina SRL
 Onvio LLC
 Orttch
 PI (Physik Instrumente) L.P. Piezo Actuator Nano
 PIC Design
 PTD Outlet: Power Transmission Distributors
 Paul's Transmission Shenzhen Co.,Ltd
 Peer Bearing Company
 Pix Europe Limited
 Pix Transmissions Limited
 Plastock - Putnam Precision Molding, Inc.
 Popular Mechanical Works
 Potomac Electric
 Power Transmission Engineers
 Powermach Import & Export Co.,Ltd
 Pulley Manufacturers International Inc.

QA1 Precision Products

21730 HANOVER AVE, LAKEVILLE, MN 55044
 Phone: (800) 721-7761
 Fax: (952) 985-5679
 sales@qa1.net
 www.qa1.net/industrial

SEE OUR AD
P2**Quality Transmission Components**

RGW Sales Canada
 RUBENA a.s.
 Rathpolybond Pty Ltd.
 René Baer AG
 Resistoflex Private Limited
 Ringball Corporation
 Ringspann Corporation
 Ritbearing Corp.
 Rockwell Automation
 Romax Technology Limited
 Rotor Clip Company, Inc.
 Rowland Co., The

SEW-Eurodrive

1295 OLD SPARTANBURG HWY., LYMAN, SC 29635
 Phone: (864) 439-7537
 Fax: (864) 439-7830
 www.seweurodrive.com

SEE OUR AD
INSIDE BACK COVER**SIPCO-MLS****SKF USA Inc.**

890 FORTY FOOT ROAD, LANSDALE, PA 19446
 Phone: (267) 436-6000
 www.skf.com

SEE OUR AD
P3**SKG Enterprises**

Schenck Trebel Corporation
 Smart Manufacturing Technology - SMT
 Specialty Motions, Inc.
 Spn Schwaben Praezision
 Sprockets Australia Pty. Ltd.
 Stearns Division / Rexnord Industries Inc.
 Steelmans Broaches Pvt Ltd
 Steinmeyer Inc.

Sterling Instrument

2101 JERICHO TURNPIKE, NEW HYDE PARK, NY 11040
 Phone: (516) 328-3300
 Fax: (516) 326-8827
 sdp-sisupport@sdp-si.com
 www.sdp-si.com

SEE OUR AD
BACK COVER
P42,45**Stock Drive Products**

2101 JERICHO TURNPIKE, NEW HYDE PARK, NY 11040
 Phone: (516) 328-3300
 Fax: (516) 326-8827
 sdp-sisupport@sdp-si.com
 www.sdp-si.com

SEE OUR AD
BACK COVER
P35,40

Sumitomo Machinery Corp. of America
 T.E.A. Machine Components
 TSS Rotterdam B.V.
 Taiwan Precision Gear Corp.
 Tapeswitch Corporation
 Team Industries
 Technico
 Tef - Cap Industries
 Test Equipment Connection
 Tool Masters India
 Torque Transmission
 Transply Inc.
 Tristate Bearing & Supply Co. Inc.
 Trojon Gear Inc.
 Tsubaki of Canada Limited
 V2 Engineering Systems
 VCST LP
 VL Motion Systems Inc.

Vision Quality Components, Inc
 WD Bearing America
 WMH Transmissions Ltd
 Warner Linear
 Whittet-Higgins Company

Worldwide Electric Corp.

1 GROVE ST. #201B
 PITTSFORD, NY 14534
 Phone: (800) 808-2131
 Fax: (800) 711-1616
 www.worldwideelectric.net

SEE OUR AD
P34

Wyko - London & Overseas Supplies
 Zerelli Technologies Inc
 pylon Gears (Pty) Ltd

ACTUATORS

AGI Automation Components
 Acme Gear Co.



**DAY & NIGHT
 WE WORK HARD FOR YOU**

IDC-USA[®]

Your IDC Distributor is on call
 with the products & expertise you need



WWW.IDC-USA.COOP / DIFFERENCE

Acorn Industrial Services
 Aerotech Inc.
 Agro Engineers
 Akgears, LLC
 Amacoil, Inc.
 Ametric / American Metric Corporation
 Anaheim Automation, Inc.
 Atlanta Drive Systems Inc.
 Avion Technologies Inc.
 BDI - Bearing Distributors Inc.
 Bearings and Industrial Supply Co., Inc.
 Beaver Aerospace and Defense Inc.
 Befared
 BellowsTech, LLC
 Bevel Gears India Pvt. Ltd.
 Bharat Gears Ltd.
 Bishop-Wisecarver Corp.
 Buehler Motor, Inc.
 Calicut Engineering Works Limited
 Central Gear & Machine
 Certified Reducer Rebuilders Inc
 Control Switches International Inc (csii)
 Core Supply LLC
 Curtis Machine Co. Inc.
 Custom Sensors & Technologies
 Dalton Bearing Service, Inc.
 Danaher Motion and Thomson
 Del-Tron Precision Inc.

Designatronics, Inc.

2101 JERICHO TURNPIKE, NEW HYDE PARK, NY 11040
 Phone: (516) 328-3300
 Fax: (516) 326-8827
 info@designatronics.com
 www.designatronics.com

SEE OUR AD
 BACK COVER
 P 34, 35,
 40, 42, 45

Discovery Technology International, Inc.
 Dn Sales Australia
 Drive Lines Technologies Ltd
 Duff Norton Australia
 Dunkermotoren USA Inc.
 Dynamic Structures and Materials, LLC
 Emerson Industrial Automation - Drives & Motor
 Exlar Corporation
 FMC Engineering
 Festo Corporation
 Fife Corporation
 Framo Morat Inc.
 Gil Equipamentos Industriais Ltda.
 Gleason K2 Plastics
 Hallmark Industries Inc.
 Houston Pump and Gear
 IAI America, Inc.
 IBT, Inc

IDC-USA

933 WESTERN DRIVE, INDIANAPOLIS, IN 46241
 Phone: (317) 244-9200
 Fax: (317) 244-4600
 sswaim@idc-usa.com
 www.IDC-USA.com

SEE OUR AD
 P 29

ITW Heartland
 Industrial Clutch Parts Ltd.
 Intellidrives, Inc
 K+S Services
 Kamar Industries
 LYC North America Inc
 Lab Threads & Gear Works, Inc.
 MROSupply
 Mavilor Motors, S.a.
 Midwest Motion Products
 Motion Industries
 Ngt Specialty Valves
 Niebuhr Gears

Ningbo Zhongyi Hydraulic Motor Co. Ltd.

NINGBO ZHENHAI ECONOMIC DEVELOPMENT ZONE
 ROAD 88, ITALY
 NINGBO
 CHINA
 Phone: +(86) 574-86261172-800
 Fax: +(86) 574-86288064
 sales@zihyd.com
 www.zihyd.com

SEE OUR AD
 P 33

North American Clutch Corp. (noram)
 Norwin Electronics Limited
 Novotec Argentina SRL
 PI (Physik Instrumente) L.P. Piezo Actuator Nano
 PTD Outlet: Power Transmission Distributors
 Parker Hannifin Electromechanical Automation Divis
 Performance Gear Systems, Inc.
 Popular Mechanical Works
 Portescap
 Potomac Electric
 Precipart
 Precision Screw Thread
 RGW Sales Canada
 Rex Engineering Corp.
 Ringball Corporation
 Rockwell Automation
 Rowland Co., The
 S.M. Shah & Company

SEW-Eurodrive

1295 OLD SPARTANBURG HWY., LYMAN, SC 29635
 Phone: (864) 439-7537
 Fax: (864) 439-7830
 www.seweurodrive.com

SEE OUR AD
 INSIDE BACK COVER

SIPCO-MLS

SKF USA Inc.

890 FORTY FOOT ROAD, LANSDALE, PA 19446
 Phone: (267) 436-6000
 www.skf.com

SEE OUR AD
 P 3

Sallex Machine Tools

Schaeffler Group USA, Inc

308 SPRINGHILL FARM ROAD
 FORT MILL, SC 29715
 Phone: (803) 548-8500
 Fax: (803) 548-8599
 www.schaeffler.us

SEE OUR AD
 P 7

Schneider Electric Motion Competency Center
 Serapid Inc.
 Servometer
 Sesame Motor Corp.
 Specialty Motions, Inc.
 Spn Schwaben Praezision
 Steinmeyer Inc.

Sterling Instrument

2101 JERICHO TURNPIKE, NEW HYDE PARK, NY 11040
 Phone: (516) 328-3300
 Fax: (516) 326-8827
 sdp-sisupport@sdp-si.com
 www.sdp-si.com

SEE OUR AD
 BACK COVER
 P 42, 45

T.E.A. Machine Components
 Technico
 Tolomatic, Inc.
 VL Motion Systems Inc.
 WEG
 Warner Linear
 Wittenstein (formerly alpha gear drives)
 Wyko - London & Overseas Supplies

ADJUSTABLE SPEED DRIVES

AISCO Industrial Couplings
 ASI Technologies Inc.
 Ace World Companies
 Acme Gear Co.
 Acorn Industrial Services
 Aerotech Inc.
 Agro Engineers
 Akgears, LLC
 Allied Motion
 Amacoil, Inc.

Ametric / American Metric Corporation
 Andantex USA Inc.
 Area Distributors Inc.
 Atlanta Gear Works, Inc

Automation Direct

3505 HUTCHINSON ROAD, CUMMING, GA 30040
 Phone: (800) 633-0405
 Fax: (770) 844-4212
 sales@automationdirect.com
 www.automationdirect.com

SEE OUR AD
 INSIDE FRONT COVER

B&B Manufacturing, Inc.
 BDI - Bearing Distributors Inc.

Baldor Electric Company

5711 R.S. BOREHAM, JR. ST.
 P.O. BOX 2400
 FORT SMITH, AR 72901
 Phone: (479) 646-4711
 Fax: (479) 648-5792
 www.baldor.com

SEE OUR AD
 P 21

Bearing Service Company
 Beaver Aerospace and Defense Inc.
 Bevel Gears India Pvt. Ltd.
 Bison Gear and Engineering Corp.
 Bonfiglioli Riduttori S.p.A.
 Bonfiglioli USA
 Boston Gear
 Brevini Power Transmission - Canada
 Brevini USA
 Brewer Machine & Gear Co.
 Buehler Motor, Inc.
 Calicut Engineering Works Limited
 Carlisle Power Transmission
 Carlyle Johnson Machine Co. LLC, The
 Central Gear & Machine
 Certified Reducer Rebuilders Inc
 Challenge Power Transmission PLC
 Cleveland Gear Co.
 Conroll Corporation
 Custom Motors Inc.
 Cutes Corporation
 D&D Intl. Corp.
 Dalton Bearing Service, Inc.
 Danaher Motion and Thomson
 Davall Gears Ltd.
 Duff Norton Australia
 Dunkermotoren USA Inc.
 Dynex/Rivett Inc.
 Electronic Machine Parts
 Emerson Industrial Automation - Drives & Motor
 Essential Power Transmission Pvt. Ltd.
 FMC Engineering
 Fairchild Industrial Products Co.
 Festo Corporation
 GMB Associates
 Gayatri Gear Industries
 Gil Equipamentos Industriais Ltda.
 HPB Motion Control Co. Ltd.
 Hoffmann Technics Ag
 Houston Pump and Gear
 IBT, Inc

IDC-USA

933 WESTERN DRIVE, INDIANAPOLIS, IN 46241
 Phone: (317) 244-9200
 Fax: (317) 244-4600
 sswaim@idc-usa.com
 www.IDC-USA.com

SEE OUR AD
 P 29

Intellidrives, Inc
 K+S Services
 KB Controls
 LEESON Electric

Lafert North America

5620 KENNEDY RD.
 MISSISSAUGA ON L4Z 2A9
 CANADA
 Phone: (905) 629-1939 or toll free (800) 661-6413
 Fax: (905) 629-2852
 ptsales@lafertna.com
 www.lafertna.com

SEE OUR AD
 P 15

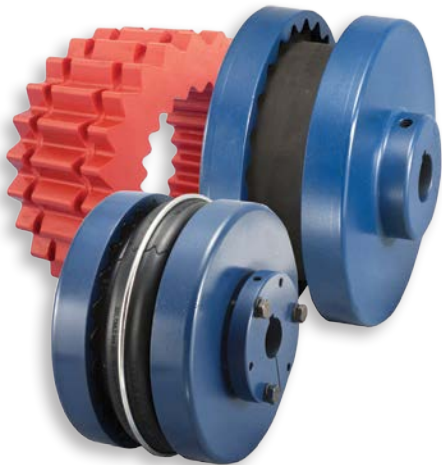
Martin

Flexible Couplings



Jaw Couplings

- No lubrication
- Easy installation
- No metal-to-metal contact
- Oil, dirt, sand, moisture, grease resistant
- Easy inspection of load carrying element (spider)
- Flexibility of angular or parallel misalignment of shafts by Buna-N element permits smooth power transmission
- Two styles of **Jaw Couplings** available:
 - *Martin Super (MS)*, for higher horsepower
 - *Martin Universal (ML)*, completely interchangeable



QUADRA-FLEX®

This couplings come in a variety of styles and designs to meet specific customer needs. These styles include flanges and sleeves of various types and materials. The total product line includes 13 sizes varying in torque ratings up to 72,000 in-lb.

The sleeves are available in 4 different compounds:

- **TPR** (Types JEM, JEMS, EM)
- **EPDM** (Type E)
- **Neoprene** (Type N)
- **Hytrel®** (Type H & HS)



Martin SPROCKET & GEAR, INC.

www.martinsprocket.com • 817-258-3000



Marshall Wolf Automation Inc.
 Maurey Manufacturing Corporation
 Mavilor Motors, S.a.
 Mitsubishi Electric Automation, Inc.
 Motion Industries
 NAC Harmonic Drive
 New Power Electric (USA) LLC
 Norwin Electronics Limited
 Novotec Argentina SRL
 PI (Physik Instrumente) L.P. Piezo Actuator Nano
 PTD Outlet: Power Transmission Distributors
 Parker Hannifin - SSD Drives Div.
 Performance Gear Systems, Inc.
 Phytion, Inc.
 Potomac Electric
 Precipart
 René Baer AG
 Rockwell Automation
 S.M. Shah & Company

SEW-Eurodrive

1295 OLD SPARTANBURG HWY., LYMAN, SC 29635

Phone: (864) 439-7537

Fax: (864) 439-7830

www.seweurodrive.comSEE OUR AD
INSIDE BACK COVER

Sallex Machine Tools
 Schneider Electric Motion Competency Center
 Serapid Inc.
 Siemens Energy & Automation
 Siemens Industry, Inc.
 Siti Spa Riduttori
 Specialty Motions, Inc.
 Sprockets Australia Pty. Ltd.

Sterling Instrument

2101 JERICHO TURNPIKE, NEW HYDE PARK, NY 11040

Phone: (516) 328-3300

Fax: (516) 326-8827

sdp-sisupport@sdp-si.comwww.sdp-si.comSEE OUR AD
BACK COVER
P42,45

Stober Drives, Inc.
 Suzhou Asia Pacific Metal Co., Ltd.
 TB Wood's
 TVT America, Inc.
 Taiwan Precision Gear Corp.
 Team Industries
 Teco Westinghouse
 Tolomatic, Inc.
 Transply Inc.
 Tristate Bearing & Supply Co. Inc.
 VL Motion Systems Inc.
 Var-Spe Variatori Oleodinamici
 Vision International
 WEG

Worldwide Electric Corp.1 GROVE ST. #201B
PITTSFORD, NY 14534

Phone: (800) 808-2131

Fax: (800) 711-1616

www.worldwideelectric.netSEE OUR AD
P34

Wyko - London & Overseas Supplies
 Xuzhou BeiLai Engineering Machinery Co., Ltd
 Zero-Max

BEARINGS

AST Bearings
 Accent Bearings Co. Inc.
 Acorn Industrial Services
 Aerotech Inc.
 American Plastics Depot
 American Swiss Products Co., Inc.
 Ametric / American Metric Corporation
 Area Distributors Inc.
 B&B Manufacturing, Inc.
 BDI - Bearing Distributors Inc.
 Baker Bearing Company

Baldor Electric Company5711 R.S. BOREHAM, JR. ST.
P.O. BOX 2400
FORT SMITH, AR 72901
Phone: (479) 646-4711
Fax: (479) 648-5792
www.baldor.comSEE OUR AD
P21

Barrel Service Company
 Bearing Service Company
 Bearings Limited
 Beijing THC Limited
 Bently Pressurized Bearing Co.
 Bishop-Wisecarver Corp.
 Bison Gear and Engineering Corp.
 Boca Bearing Company
 Boston Gear
 Brewer Machine & Gear Co.

C&U Americas, LLC45901 FIVE MILE ROAD
PLYMOUTH, MI 48170

Phone: (734) 656-0260

Fax: (734) 656-0261

contact@cubearing.comwww.cubearing.comSEE OUR AD
P32

CCVI Bearing
 Carlisle Power Transmission
 Central Gear & Machine
 Certified Reducer Builders Inc
 Challenge Power Transmission (Aust) Pty Ltd
 Challenge Power Transmission PLC
 Climax Metal Products Company
 Core Supply LLC
 Craft Bearing Company, Inc.
 Cross + Morse
 D&D Intl. Corp.
 Daemar Inc.
 Dalton Bearing Service, Inc.
 Danaher Motion and Thomson

Del-Tron Precision Inc. Designatronics, Inc.

2101 JERICHO TURNPIKE, NEW HYDE PARK, NY 11040

Phone: (516) 328-3300

Fax: (516) 326-8827

info@designatronics.comwww.designatronics.comSEE OUR AD
BACK COVER
**P34,35,
40,42,45**

Discovery Technology International, Inc.
 Drive Components LLC
 Drive Lines Technologies Ltd
 EDT Corp
 Electro Static Technology
 Emerson Power Transmission
 F.K. Bearings
 FK Bearing Corp.
 FMC Engineering
 Formsprag Clutch
 Fusion Babbitting Co, Inc
 GMB Associates
 GMN Bearing Usa, Ltd.
 Gil Equipamentos Industriais Ltda.
 Hangzhou Xingda Machinery Co. Ltd.
 Hebei Kaidi Bearing (Group) Co., Ltd.
 Houston Pump and Gear
 IBT, Inc

IDC-USA

933 WESTERN DRIVE, INDIANAPOLIS, IN 46241

Phone: (317) 244-9200

Fax: (317) 244-4600

sswaim@idc-usa.comwww.IDC-USA.comSEE OUR AD
P29

IMO USA Corp.
 Industrial Friction Materials Ltd.
 Intellidrives, Inc
 International Distribution Alliance, Inc. (IDA, In
 Kaydon Corporation Bearings Division
 Kilian Manufacturing Corp.
 Kinefac Corporation
 LM76 Linear Motion Bearings
 LYC North America Inc

Luoyang SBI Special Bearing Co. Ltd.WEISI ROAD
LUOYANG INDUSTRIAL PARK
XIGONG HENAN PROVINCE
CHINA

Phone: +(86) 379-64122001

Fax: +(86) 379-64122002

judy@sbi.com.cnwww.sbibearings.comSEE OUR AD
P10

MMB Bearing Co. Inc.
 MT Tool & Manufacturing
 Maguire Technologies

Martin Sprocket & Gear

3100 SPROCKET DRIVE, ARLINGTON, TX 76015

Phone: (817) 258-3000

Fax: (817) 258-3333

mail@martinsprocket.comwww.martinsprocket.comSEE OUR AD
P31

Micronor Inc.
 Mineral Circles Bearings
 Modern Linear Inc.
 Motion Industries
 Moventas Ltd.

1.88ThinkNSK (888.446.5675) www.nskamericas.com**NSK Corporation**4200 GOSS ROAD
ANN ARBOR, MI 48105

Phone: (888) 446-5675

strackh@nsk-corp.comwww.nskamericas.comSEE OUR AD
P32

Nachi America Inc.
 Napoleon Engineering Services
 Netshape Technologies, Inc.
 Novotec Argentina SRL
 Ondrives Ltd
 Onvio LLC
 PIC Design
 PTD Outlet: Power Transmission Distributors
 Pacamor Kubar Bearings (pkb)
 Pacific Bearing
 Pacific Industries
 Paul's Transmission Shenzhen Co.,Ltd
 Peer Bearing Company
 Pioneer Bearing Company
 Powermach Import & Export Co.,Ltd
 Pulley Manufacturers International Inc.

QA1 Precision Products

21730 HANOVER AVE, LAKEVILLE, MN 55044

Phone: (800) 721-7761

Fax: (952) 985-5679

sales@qa1.netwww.qa1.net/industrialSEE OUR AD
P2



THOTH

Quality Achievement Dream

Ningbo Zhongyi Hydraulic Motor Co, Ltd was found in 1971, which is the high tech mfg. expert of orbital motors, steering control units, transmission and mobile motors. At present we have two manufacturing bases, one is in Ningbo city covering an area of 44,000 square meters, the other one is in Wuhu city with an area of 80,000 square meters. Our manufacturing workshop meets the international standards and the manufacture and test equipments are leading technologically home and abroad. The staffs of Zhongyi will creat first class products, services and brand hands in hands with you.

For more information, pls visit www.zihyd.com.

Email: sales@zihyd.com Linda@zihyd.com

Tel: 0086-574-86378895 Fax: 0086-574-86378310



QBC the Bearing Marketplace

Configurable Bearings
Press Bearings
Thin Section
Rod Ends



www.qbcbearings.com

Designatronics inc.

Quality Bearings & Components

2101 JERICHO TURNPIKE, NEW HYDE PARK, NY 11040
Phone: (516) 616-0436
Fax: (516) 616-0443
qbcsupport@qbcbearings.com
www.qbcbearings.com

SEE OUR AD
P34

RBI Bearing Inc.
RGW Sales Canada
RUBENA a.s.
Rathipolybond Pty Ltd.
René Baer AG
Ringball Corporation
Ritbearing Corp.
Rockwell Automation

SKF USA Inc.

890 FORTY FOOT ROAD, LANSDALE, PA 19446
Phone: (267) 436-6000
www.skf.com

SEE OUR AD
P3

SKG Enterprises
SYX Bearing

Schaeffler Group USA, Inc

308 SPRINGHILL FARM ROAD
FORT MILL, SC 29715
Phone: (803) 548-1800
Fax: (803) 548-8599
www.schaeffler.us

SEE OUR AD
P7

Specialty Motions, Inc.
Sprockets Australia Pty. Ltd.

Sterling Instrument

2101 JERICHO TURNPIKE, NEW HYDE PARK, NY 11040
Phone: (516) 328-3300
Fax: (516) 326-8827
sdp-sisupport@sdp-si.com
www.sdp-si.com

SEE OUR AD
BACK COVER
P42,45

Stock Drive Products

2101 JERICHO TURNPIKE, NEW HYDE PARK, NY 11040
Phone: (516) 328-3300
Fax: (516) 326-8827
sdp-sisupport@sdp-si.com
www.sdp-si.com

SEE OUR AD
BACK COVER
P35,40

Supreme Gear Co.
T.E.A. Machine Components
TB Wood's
TSS Rotterdam B.V.
Tef - Cap Industries
Top Machinery & Equipment (Zhengzhou) Ltd
Torque Transmission
Transply Inc.
Tristate Bearing & Supply Co. Inc.
Trojan Gear Inc.
Tsubaki of Canada Limited
VL Motion Systems Inc.
Vision Quality Components, Inc
WD Bearing America
WMH Transmissions Ltd
Wyko - London & Overseas Supplies
Xuzhou BeiLai Engineering Machinery Co., Ltd
Yogi Bearings
pylon Gears (Pty) Ltd

Ace World Companies
Acorn Industrial Services
Agro Engineers
Akron Gear and Engineering
Amacoil, Inc.
Aman Transmission Co
American Gear & Engineering
American Gear, Inc.
American Plastics Depot
Ametric / American Metric Corporation
Area Distributors Inc.
Ascent Precision Gear Corporation
Ashutosh Power TransBelts Limited
Avion Technologies Inc.
B&B Manufacturing, Inc.
BDI - Bearing Distributors Inc.
BRECOflex CO., L.L.C.

Baldor Electric Company

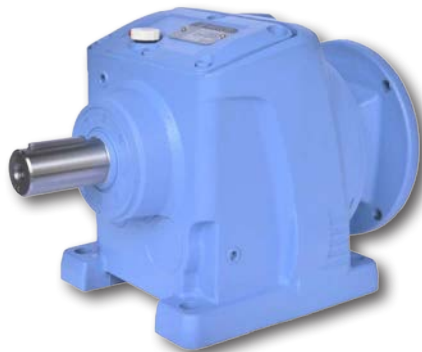
5711 R.S. BOREHAM, JR. ST.
P.O. BOX 2400
FORT SMITH, AR 72901
Phone: (479) 646-4711
Fax: (479) 648-5792
www.baldor.com

SEE OUR AD
P21

Bearing Service Company
Beijing THC Limited
Belcon Engineers P. Ltd.
Bervina
Bishop-Wisecarver Corp.
Boca Bearing Company
Bowman Hollis Mfg
Brevini Power Transmission - Canada
Brewer Machine & Gear Co.
Butler Gear
Calicut Engineering Works Limited
Capstan Atlantic
Carlisle Power Transmission
Carnes-Miller Gear Co., Inc.

BELTS & BELT DRIVES

ABL Products Incorporated
Accent Bearings Co. Inc.



In Stock!

Helical Inline Speed Reducers:

- 1/4 HP - 75 HP; ALL RATINGS IN STOCK
- Box sizes: 37 - 147; Ratios: 5:1 - 120:1
- Cast iron housing is precision processed for better rotation and quieter operation
- Drop-in replacement for most major inline reducer brands
- 2 year warranty

CALL US NOW TO GET YOUR SPECIAL PRICING!



WorldWide Electric Corporation

1-800-808-2131

www.worldwideelectric.net

Certified Reducer Rebuilders Inc
Challenge Power Transmission (Aust) Pty Ltd
Challenge Power Transmission PLC
Clark Gear Works, Inc.
Clarke Engineering Inc. (Clarke Gear Co.)
ComInTec Srl
Commercial Gear & Sprocket Co. Inc.

Cone Drive

240 EAST 12TH STREET
TRAVERSE CITY, MI 49685-0272
Phone: (888) 994-2663
Fax: (888) 907-2663
orders@conedrive.com
www.conedrive.com

SEE OUR AD
P39

Conroll Corporation



Continental

ContiTech

ContiTech North America

136 SUMMIT AVENUE
MONTVALE, NJ 07645
Phone: (201) 930-0600
info@contitech-usa.com
www.contitech.us

SEE OUR AD
P35

Core Supply LLC

Cross + Morse
Custom Machine & Tool Co. Inc.
D&D Intl. Corp.
Dalton Bearing Service, Inc.
Darbar Belting
Davall Gears Ltd.
Dee Bee Enterprise
Del-Tron Precision Inc.
Delta Gear Corp.

Designatronics, Inc.

2101 JERICHO TURNPIKE, NEW HYDE PARK, NY 11040
Phone: (516) 328-3300
Fax: (516) 326-8827
info@designatronics.com
www.designatronics.com

SEE OUR AD
BACK COVER
P34, 35,
40, 42, 45

Dimatic Die & Tool Co.

Drive Components LLC
Dura-Belt
Dymco, Co
Electro Steel Engineering Company
Emerson Power Transmission

Excel Gear, Inc.

11865 MAIN STREET, ROSCOE, IL 61073
Phone: 815-623-3414
Fax: 815-623-3314
chinn@excelgear.com
www.excelgear.com

SEE OUR AD
P22

First Gear Engineering & Technology

7606 FREEDOM WAY
FORT WAYNE, IN 46818
Phone: (260) 490-3238
Fax: (260) 490-4093
greg@first-gear.com
www.first-gear.com

SEE OUR AD
P11

Forest City Gear Co.

11715 MAIN STREET
ROSCOE, IL 61073
Phone: (815) 623-2168
Fax: (815) 623-6620
rmikel@fcgear.com
www.fcgear.com

SEE OUR AD
P13

GMB Associates
Gates Corporation

Gayatri Gear Industries
Gear Design & Service Pty. Ltd.
George Lane & Sons Ltd
Gil Equipamentos Industriais Ltda.
Hangzhou Xingda Machinery Co. Ltd.
Hayes Manufacturing Inc.
IBT, Inc

IDC-USA

933 WESTERN DRIVE, INDIANAPOLIS, IN 46241
Phone: (317) 244-9200
Fax: (317) 244-4600
sswaim@idc-usa.com
www.IDC-USA.com

SEE OUR AD
P29

Industrial Jig & Fixture
Industrial Pulley & Machine Co, Inc.
Intech Corporation
Jason Industrial Inc.
Kamar Industries
Kapsyn Manufacturing Company
LEESON Electric
Lovejoy, Inc.
MGT - Magnetic Gearing & Turbine Corp.
MT Tool & Manufacturing
Maguire Technologies

Martin Sprocket & Gear

3100 SPROCKET DRIVE, ARLINGTON, TX 76015
Phone: (817) 258-3000
Fax: (817) 258-3333
mail@martinsprocket.com
www.martinsprocket.com

SEE OUR AD
P31

Maurey Manufacturing Corporation
Midwest Brake
Milltex Engineering Company
Ming Chang Traffic Parts Mfg.
Motion Industries
Nav Auxichem Pvt. Ltd
Neelkanth Belting
Netshape Technologies, Inc.
New England Belting Company
North American Clutch Corp. (noram)
Novotec Argentina SRL
Ongears - Ondrives Export Gears
Ontario Gear and Spline
Onvio LLC
PIC Design

PTD Outlet: Power Transmission Distributors
Paul's Transmission Shenzhen Co.,Ltd
Pix Europe Limited
Pix Transmissions Limited
Plastock - Putnam Precision Molding, Inc.
Popular Mechanical Works
Powermach Import & Export Co.,Ltd
Premier Udyog
Pulley Manufacturers International Inc.
Quality Transmission Components
RUBENA a.s.
René Baer AG
Ringball Corporation
Rockwell Automation
Rowland Co., The
Rush Gears Inc.

SKF USA Inc.

890 FORTY FOOT ROAD, LANSDALE, PA 19446
Phone: (267) 436-6000
www.skf.com

SEE OUR AD
P3

SKG Enterprises
Sallex Machine Tools
Schafer Industries
Sprockets Australia Pty. Ltd.

SDP Stock Drive Products

Setting Ideas into Motion

Engineered Synchronous
Drive Solutions

Off-the-shelf

www.sdp-si.com

Designatronics inc.



Stock Drive Products

2101 JERICHO TURNPIKE, NEW HYDE PARK, NY 11040
Phone: (516) 328-3300
Fax: (516) 326-8827
sdp-sisupport@sdp-si.com
www.sdp-si.com

SEE OUR AD
BACK COVER
P35, 40

Supreme Gear Co.
T.E.A. Machine Components
TB Wood's
TSS Rotterdam B.V.
TVT America, Inc.
Team Industries
Tolomatic, Inc.
Tool Masters India
Top Machinery & Equipment (Zhengzhou) Ltd
Torque Transmission
Transply Inc.
Tristate Bearing & Supply Co. Inc.
Trojon Gear Inc.
Tsubaki of Canada Limited
VL Motion Systems Inc.
Vision International
Vision Quality Components, Inc
Volta Belting
WMH Transmissions Ltd
Wyko - London & Overseas Supplies
Yogi Bearings
Zeon Belts Pvt. Ltd.
pylon Gears (Pty) Ltd

BRAKES

Acionac Indústria E Comércio
Andantex USA Inc.
Applied Power Solutions
Area Distributors Inc.
BDI - Bearing Distributors Inc.
Beaver Aerospace and Defense Inc.
Bison Gear and Engineering Corp.
Brevini Power Transmission - Canada
Carlyle Johnson Machine Co. LLC, The
Certified Reducer Rebuilders Inc
Coremo Ocmea S.r.l.
Cryotron Magnadrives
Currie Enterprises
Dalton Bearing Service, Inc.
Danaher Motion and Thomson
Dellner Brakes AB

Designatronics, Inc.

2101 JERICHO TURNPIKE, NEW HYDE PARK, NY 11040
Phone: (516) 328-3300
Fax: (516) 326-8827
info@designatronics.com
www.designatronics.com

SEE OUR AD
BACK COVER
P34, 35,
40, 42, 45

Dings Company
Drive Lines Technologies Ltd
Dunkermotoren USA Inc.
Electromatic Engineers Pvt. Ltd
Emco Dynatorq Pvt. Ltd. (Formerly Emco Lenze Pvt.
Force Control Industries
GMB Associates
Gummi Usa
Hilliard Corp., The
Hoffmann Technics Ag
IBT, Inc
Industrial Clutch Parts Ltd.

Industrial Friction Materials Ltd.
Inertia Dynamics, Inc.
JVL Industri Elektronik A/S
Johnson Industries Ltd.

KTR Corporation

122 ANCHOR ROAD, MICHIGAN CITY, IN 46360
Phone: (219) 872-9100
Fax: (219) 872-9150
ktr-us@ktr.com
www.ktr.com

SEE OUR AD
P39,40**Klam America Corporation****Lafert North America**

5620 KENNEDY RD.
MISSISSAUGA ON L4Z 2A9
CANADA
Phone: (905) 629-1939 or toll free (800) 661-6413
Fax: (905) 629-2852
ptsales@lafertna.com
www.lafertna.com

SEE OUR AD
P15

MICO, Incorporated
Mach III Clutch Inc.
Magnetic Technologies Ltd
Magtrol, Inc.
Marshall Wolf Automation Inc.
Matrix International
Mayr Corporation
Midwest Brake
Midwest Motion Products
Motion Industries
New Torque, Inc.

Ningbo Zhongyi Hydraulic Motor Co. Ltd.

NINGBO ZHENHAI ECONOMIC DEVELOPMENT ZONE
ROAD 88, ITALY
NINGBO
CHINA
Phone: +(86) 574-86261172-800
Fax: +(86) 574-86288064
sales@zihyd.com
www.zihyd.com

SEE OUR AD
P33

North American Clutch Corp. (noram)
Novotec Argentina SRL
Onvio LLC
Orttech
PIC Design
PTD Outlet: Power Transmission Distributors
Palmer Johnson Power Systems
Pethe Engineering Private Limited
Power Transmission Engineers
Precipart
Ringspann Corporation
Rockwell Automation
Rowland Co., The
Sprockets Australia Pty. Ltd.
Stearns Division / Rexnord Industries Inc.
Stephenson Gobin Transmissions

Sterling Instrument

2101 JERICHO TURNPIKE, NEW HYDE PARK, NY 11040
Phone: (516) 328-3300
Fax: (516) 326-8827
sdp-sisupport@sdp-si.com
www.sdp-si.com

SEE OUR AD
BACK COVER
P42,45**Stock Drive Products**

2101 JERICHO TURNPIKE, NEW HYDE PARK, NY 11040
Phone: (516) 328-3300
Fax: (516) 326-8827
sdp-sisupport@sdp-si.com
www.sdp-si.com

SEE OUR AD
BACK COVER
P35,40

TB Wood's
Taiwan Precision Gear Corp.
Team Industries
Tolomatic, Inc.
Transply Inc.
Twiflex Limited
VL Motion Systems Inc.
Vortex Engineering Works
WPT Power Corporation
Wyko - London & Overseas Supplies

CHAIN & CHAIN DRIVES

ABL Products Incorporated
Accent Bearings Co. Inc.
Accurate Gear and Machine, Inc.
Acorn Industrial Services
Agro Engineers
Akron Gear and Engineering
American Plastics Depot
Ametric / American Metric Corporation
Area Distributors Inc.
Ascent Precision Gear Corporation
B&B Manufacturing, Inc.

B&R Machine and Gear Corp.

4809 U.S. HWY. 45
SHARON TN 38255
Phone: (731) 456-2636 or (800) 238-0651
Fax: (731) 456-3073
inquiry@brgear.com
www.brgear.com

SEE OUR AD
P9

BDI - Bearing Distributors Inc.
Bearing Service Company
Bearings Limited
Beijing THC Limited
Bishop-Wisecarver Corp.
Bowman Hollis Mfg
Brevini Power Transmission - Canada
Brewer Machine & Gear Co.
C-B Gear & Machine
Calicut Engineering Works Limited
Central Gear & Machine
Certified Reducer Builders Inc
Challenge Power Transmission (Aust) Pty Ltd
Challenge Power Transmission PLC
Cloyes Gear & Products Inc.
Commercial Gear & Sprocket Co. Inc.
Core Supply LLC
Cross + Morse
D&D Intl. Corp.
Daido Corporation of America
Dalton Bearing Service, Inc.
Darbar Belting
Davall Gears Ltd.

Designatronics, Inc.

2101 JERICHO TURNPIKE, NEW HYDE PARK, NY 11040
Phone: (516) 328-3300
Fax: (516) 326-8827
info@designatronics.com
www.designatronics.com

SEE OUR AD
BACK COVER
P34,35,
40,42,45

Diamond Chain Company
Electro Steel Engineering Company
Emerson Power Transmission

First Gear Engineering & Technology

7606 FREEDOM WAY
FORT WAYNE, IN 46818
Phone: (260) 490-3238
Fax: (260) 490-4093
greg@first-gear.com
www.first-gear.com

SEE OUR AD
P11

Framo Morat Inc.
GMB Associates
Gates Corporation
Gayatri Gear Industries
Gear Master Inc.
Hangzhou Xingda Machinery Co. Ltd.
Henan Contrust Gear Transmission Co., Ltd.
IBT, Inc

IDC-USA

933 WESTERN DRIVE, INDIANAPOLIS, IN 46241
Phone: (317) 244-9200
Fax: (317) 244-4600
sswaim@idc-usa.com
www.IDC-USA.com

SEE OUR AD
P29

Kamar Industries
MGT - Magnetic Gearing & Turbine Corp.
MT Tool & Manufacturing

Martin Sprocket & Gear

3100 SPROCKET DRIVE, ARLINGTON, TX 76015
Phone: (817) 258-3000
Fax: (817) 258-3333
mail@martinsprocket.com
www.martinsprocket.com

SEE OUR AD
P31

Ming Chang Traffic Parts Mfg.
Motion Industries
Moventas Ltd.
North American Clutch Corp. (noram)
Nu-Teck Couplings Pvt. Ltd
PIC Design
PTD Outlet: Power Transmission Distributors
Pacific Industries
Paul's Transmission Shenzhen Co.,ltd
Peer Bearing Company
Performance Gear Systems, Inc.
Pix Europe Limited
Pix Transmissions Limited
Plastock - Putnam Precision Molding, Inc.
Powermach Import & Export Co.,ltd
Pulley Manufacturers International Inc.
Quality Transmission Components
RBI Bearing Inc.
René Baer AG
Ringball Corporation
Rockwell Automation
Rowland Co., The

SKF USA Inc.

890 FORTY FOOT ROAD, LANSDALE, PA 19446
Phone: (267) 436-6000
www.skf.com

SEE OUR AD
P3

SKG Enterprises
ST Gear & Machine LLC
Serapid Inc.
Sprockets Australia Pty. Ltd.

Stock Drive Products

2101 JERICHO TURNPIKE, NEW HYDE PARK, NY 11040
Phone: (516) 328-3300
Fax: (516) 326-8827
sdp-sisupport@sdp-si.com
www.sdp-si.com

SEE OUR AD
BACK COVER
P35,40

Team Industries
Torque Transmission
Transply Inc.
Tristate Bearing & Supply Co. Inc.
Trojan Gear Inc.
Tsubaki of Canada Limited
VL Motion Systems Inc.
WMH Transmissions Ltd
Wyko - London & Overseas Supplies
Yogi Bearings

CLUTCHES

AISCO Industrial Couplings
Accent Bearings Co. Inc.
Acionac Indústria E Comércio
Andantex USA Inc.
Applied Power Solutions
Area Distributors Inc.
Ascent Precision Gear Corporation
Bearing Service Company
Bibby Transmissions
Boston Gear
CENTA Corp.

Cabat Inc.

5501 21ST STREET
RACINE WI 53401-1616
Phone: (262) 898-5937
Fax: (262) 554-7503
Bgreuel@cabatinc.com
www.cabatinc.com

SEE OUR AD
P2

Carlyle Johnson Machine Co. LLC, The
Certified Reducer Builders Inc
ComInTec Srl
Commercial Gear & Sprocket Co. Inc.
Coremo Omcea S.r.l.



THE SURVIVOR

FOR EXTREME DUTY POWER TRANSMISSION:
OUR ZERO MAINTENANCE DISC PACK COUPLINGS.

Cross + Morse
Cryotron Magnadrives
D G Steel & Son Engineering Ltd.
Dalton Bearing Service, Inc.
Danaher Motion and Thomson
Davall Gears Ltd.
Desch Canada Ltd.

Designatronics, Inc.

2101 JERICHO TURNPIKE, NEW HYDE PARK, NY 11040

Phone: (516) 328-3300

Fax: (516) 326-8827

info@designatronics.com

www.designatronics.com

SEE OUR AD
BACK COVER
P34,35,
40,42,45

DieQua Corp.

180 COVINGTON DRIVE, BLOOMINGDALE, IL 60108

Phone: (630) 980-1133

Fax: (630) 980-1232

info@diequa.com

www.diequa.com

SEE OUR AD
P17

Drive Lines Technologies Ltd
Electromatic Engineers Pvt. Ltd
Emco Dynatorq Pvt. Ltd. (Formerly Emco Lenze Pvt.
Equipment Concepts
Force Control Industries
Formsprag Clutch
GMB Associates
GMN Bearing Usa, Ltd.
Ghatge Patil Industries
Gummi Usa
Hilliard Corp., The
Howdon Power Transmission Limited
Huco Dynatork
IBT, Inc
Industrial Clutch Parts Ltd.
Industrial Friction Materials Ltd.
Inertia Dynamics, Inc.

KTR Corporation

122 ANCHOR ROAD, MICHIGAN CITY, IN 46360

Phone: (219) 872-9100

Fax: (219) 872-9150

ktr-us@ktr.com

www.ktr.com

SEE OUR AD
P39,40

Bkb Antriebstechnik GmbH
Mach III Clutch Inc.
Magnetic Technologies Ltd
Magtrol, Inc.
Marine Specialties, Inc.
Marshall Wolf Automation Inc.
Matrix International
Mayr Corporation
Means Industries, Inc.
Midwest Brake
Motion Industries
Moventas Ltd.
New Torque, Inc.
North American Clutch & Driveline
North American Clutch Corp. (noram)
Novotek Argentina SRL
Orttech
PIC Design
PTD Outlet: Power Transmission Distributors
Palmer Johnson Power Systems
Pethe Engineering Private Limited
Power Transmission Engineers
Precipart

R+W America

1120 TOWER LANE, BENSENVILLE, IL 60106

Phone: (630) 521-9911

Fax: (630) 521-0366

info@rw-america.com

www.rw-america.com

SEE OUR AD
P37

René Baer AG
Ringspann Corporation
Rockwell Automation
Rowland Co., The
SIPCO-MLS
Sprockets Australia Pty. Ltd.

Stearns Division / Rexnord Industries Inc.
Stephenson Gobin Transmissions

Sterling Instrument

2101 JERICHO TURNPIKE, NEW HYDE PARK, NY 11040

Phone: (516) 328-3300

Fax: (516) 326-8827

sdp-sisupport@sdp-si.com

www.sdp-si.com

SEE OUR AD
BACK COVER
P42,45

Stieber Clutch

Stock Drive Products

2101 JERICHO TURNPIKE, NEW HYDE PARK, NY 11040

Phone: (516) 328-3300

Fax: (516) 326-8827

sdp-sisupport@sdp-si.com

www.sdp-si.com

SEE OUR AD
BACK COVER
P35,40

Supreme Gear Co.

T.E.A. Machine Components

TB Wood's

Taiwan Precision Gear Corp.

Team Industries

Tolomatic, Inc.

Transply Inc.

Tristate Bearing & Supply Co. Inc.

Twiflex Limited

VL Motion Systems Inc.

Vortex Engineering Works

WPT Power Corporation

Wyko - London & Overseas Supplies

CONTROLS

ACS Motion Control
Ace World Companies
Advanced Control Systems Corporation
Aerotech Inc.
Allied Motion
American Rotary Industrial Power Source
Anaheim Automation, Inc.
Applied Power Solutions
Area Distributors Inc.

Automation Direct

3505 HUTCHINSON ROAD, CUMMING, GA 30040

Phone: (800) 633-0405

Fax: (770) 844-4212

sales@automationdirect.com

www.automationdirect.com

SEE OUR AD
INSIDE FRONT COVER

BDI - Bearing Distributors Inc.

Baldor Electric Company

5711 R.S. BOREHAM, JR. ST.

P.O. BOX 2400

FORT SMITH, AR 72901

Phone: (479) 646-4711

Fax: (479) 648-5792

www.baldor.com

SEE OUR AD
P21

Bearing Service Company
Binsfeld Engineering Inc.
Bodine Electric Company
Bonfiglioli Riduttori S.p.A.
Bonfiglioli USA
Boston Gear
Carlyle Johnson Machine Co. LLC, The
Conroll Corporation
Control Switches International Inc (csii)
Core Supply LLC
Custom Sensors & Technologies
Cutes Corporation
Dalton Bearing Service, Inc.
Danaher Motion and Thomson
Dellner Brakes AB

DieQua Corp.

180 COVINGTON DRIVE, BLOOMINGDALE, IL 60108

Phone: (630) 980-1133

Fax: (630) 980-1232

info@diequa.com

www.diequa.com

SEE OUR AD
P17

Dn Sales Australia
Drive Lines Technologies Ltd

Dunkermotoren USA Inc.
Dynamic Structures and Materials, LLC
Electronic Machine Parts
Emerson Industrial Automation - Drives & Motor
FSI Technologies Inc.
Festo Corporation
Fife Corporation
Force Control Industries
GMB Associates
HEIDENHAIN Corporation
HPB Motion Control Co. Ltd.
Hallmark Industries Inc.
Hansen Motor Corporation
Hoffmann Technics Ag
IBT, Inc

IDC-USA

933 WESTERN DRIVE, INDIANAPOLIS, IN 46241

Phone: (317) 244-9200

Fax: (317) 244-4600

sswaim@idc-usa.com

www.IDC-USA.com

SEE OUR AD
P29

Industrial Clutch Parts Ltd.
Inertia Dynamics, Inc.
Intellidrives, Inc
JVL Industri Elektronik A/S
Johnson Industries Ltd.
K+S Services
KB Controls
LEESON Electric
MICO, Incorporated
MROSupply
Magtrol, Inc.
Marshall Wolf Automation Inc.
Mavilor Motors, S.a.
Maxon Precision Motors Inc
Micronor Inc.
Midwest Motion Products
Mitsubishi Electric Automation, Inc.
Motion Industries
New Power Electric (USA) LLC
New Torque, Inc.
Norwin Electronics Limited
Novotek Argentina SRL
Onvio LLC
Ormec
PI (Physik Instrumente) L.P. Piezo Actuator Nano
PTD Outlet: Power Transmission Distributors
Parker Hannifin - SSD Drives Div.
Parker Hannifin Electromechanical Automation Divis
Phytron, Inc.
Potomac Electric
Precipart
Regent Controls, Inc
Rockwell Automation
Rowland Co., The

SEW-Eurodrive

1295 OLD SPARTANBURG HWY., LYMAN, SC 29635

Phone: (864) 439-7537

Fax: (864) 439-7830

www.seweurodrive.com

SEE OUR AD
INSIDE BACK COVER

SKF USA Inc.

890 FORTY FOOT ROAD, LANSDALE, PA 19446

Phone: (267) 436-6000

www.skf.com

SEE OUR AD
P3

Sesame Motor Corp.
Siemens Industry, Inc.
Siti Spa Riduttori
Source Engineering Inc.
Specialty Motions, Inc.
Stearns Division / Rexnord Industries Inc.
Taiwan Precision Gear Corp.
Tapeswitch Corporation
Team Industries
Teco Westinghouse
TelcoMotion
Tolomatic, Inc.
Transply Inc.

Twiflex Limited
VL Motion Systems Inc.
WEG

Worldwide Electric Corp.
1 GROVE ST. #201B
PITTSFORD, NY 14534
Phone: (800) 808-2131
Fax: (800) 711-1616
www.worldwideelectric.net

SEE OUR AD
P34

Wyko - London & Overseas Supplies

Yaskawa America, Inc.
DRIVES & MOTORS DIVISION
2121 NORMAN DRIVE SOUTH
WAUKEGAN, IL 60085
Phone: (800) 927-5292
Fax: (847) 887-7310
tom_kutcher@yaskawa.com
www.yaskawa.com

SEE OUR AD
P19

COUPLINGS & U-JOINTS

AGI Automation Components
AISCO Industrial Couplings
Accent Bearings Co. Inc.
Accurate Gear and Machine, Inc.
Acicon Equipos Indls Ltda
Acionac Indústria E Comércio
Acorn Industrial Services
Agro Engineers
Ameridrives
Ameridrives Power Transmission
Ametric / American Metric Corporation
Annflex Bellows & Compensators
Applied Power Solutions
Area Distributors Inc.
Ascent Precision Gear Corporation
Atlanta Gear Works, Inc
Axu S.r.l.

B&R Machine and Gear Corp.
4809 U.S. HWY. 45
SHARON TN 38255
Phone: (731) 456-2636 or (800) 238-0651
Fax: (731) 456-3073
inquiry@brgear.com
www.brgear.com

SEE OUR AD
P9

BDI - Bearing Distributors Inc.
BRECOflex CO., L.L.C.
Baker Bearing Company
Bearing Service Company
Beijing THC Limited
Belcon Engineers P. Ltd.
Belden Inc.
BellowsTech, LLC
Bervina
Bevel Gears India Pvt. Ltd.
Bibby Transmissions
Boneng Transmission USA LLC
Boston Gear
Brevini Power Transmission - Canada
C-B Gear & Machine
CENTA Corp.

Cabat Inc.
5501 21ST STREET
RACINE WI 53401-1616
Phone: (262) 898-5937
Fax: (262) 554-7503
Bgreuel@cabatinc.com
www.cabatinc.com

SEE OUR AD
P2

Calicut Engineering Works Limited
Carlyle Johnson Machine Co. LLC, The
Certified Reducer Rebuilders Inc
Cestari Industrial e Comercial S.A.
Challenge Power Transmission (Aust) Pty Ltd
Challenge Power Transmission PLC
Chengdu Talent Industrial Co., Ltd.
Climax Metal Products Company
ComInTec Srl
Commercial Gear & Sprocket Co. Inc.

Made for Motion



SYNTAX®
Torque Limiter

BoWex® GT
Coupling

ROTEX®
Curved Jaw Coupling

Power Transmission Solutions

- One-stop shopping for power transmission components
- Quality, reliability & compact design
- Online selection tools

KTR Corporation
219-872-9100
www.ktr.com

STAINLESS Steel



Our **NEW** Stainless Steel gearboxes are IP 69K rated. The smooth and rounded surface allows for easy cleaning.

- Non-fretting motor connection
- IP 69K rated
- Dimensional drop-in for most worm gear manufacturers
- Cone Drive TRUE Double-Enveloping worm gearing



ENGINEERED TO KEEP YOU MOVING.
(888) 994-2663 www.conedrive.com

Made for Motion



BoWex® HE



BoWex® with GT Sleeve



ROTEX® with Split Hubs



ROTEX® GS Zero Backlash



RIGIFLEX® N

Solutions for every application.
KTR Couplings keep you up and running.

KTR Corporation
219-872-9100
www.ktr.com

Core Supply LLC
Cross + Morse
Custom Machine & Tool Co. Inc.
Dalton Bearing Service, Inc.
Dvall Gears Ltd.
David Brown
DePe Gear Company Ltd
Desch Canada Ltd.

Designatronics, Inc.
2101 JERICHO TURNPIKE, NEW HYDE PARK, NY 11040
Phone: (516) 328-3300
Fax: (516) 326-8827
info@designatronics.com
www.designatronics.com

SEE OUR AD
BACK COVER
P34,35,
40,42,45

DieQua Corp.
180 COVINGTON DRIVE, BLOOMINGDALE, IL 60108
Phone: (630) 980-1133
Fax: (630) 980-1232
info@diequa.com
www.diequa.com

SEE OUR AD
P17

Dn Sales Australia
Drive Lines Technologies Ltd
Duff Norton Australia
Electro Steel Engineering Company
Electromatic Engineers Pvt. Ltd
Emerson Power Transmission
Equipment Concepts
Flexocon Engineers Private Limited
Formsprag Clutch
GAM Gear
GMB Associates
Gayatri Gear Industries
Gear Master Inc.
Ghatge Patil Industries
Gleason K2 Plastics
Gummi USA
Hangzhou Xingda Machinery Co. Ltd.
Hayes Manufacturing Inc.
Henan Contrust Gear Transmission Co., Ltd.
Hi-Grade Inc.
Houston Pump and Gear
Huco Dynatork
IBT, Inc

IDC-USA
933 WESTERN DRIVE, INDIANAPOLIS, IN 46241
Phone: (317) 244-9200
Fax: (317) 244-4600
sswaim@idc-usa.com
www.IDC-USA.com

SEE OUR AD
P29

Industrial Clutch Parts Ltd.
Inertia Dynamics, Inc.

Couplings,
Hydraulic Coolers
& Components,
Brake Systems



122 Anchor Rd
Michigan City, IN 46360
Phone: 219-872-9100
ktr_us@ktr.com
www.ktr.com



KTR Corporation
122 ANCHOR ROAD, MICHIGAN CITY, IN 46360
Phone: (219) 872-9100
Fax: (219) 872-9150
ktr-us@ktr.com
www.ktr.com

SEE OUR AD
P39,40

Kbk Antriebstechnik GmbH
Kinefac Corporation
Lovejoy, Inc.
MAV S.p.A.
MGT - Magnetic Gearing & Turbine Corp.
Mach III Clutch Inc.
Magnetic Technologies Ltd
Marine Specialties, Inc.

Martin Sprocket & Gear
3100 SPROCKET DRIVE, ARLINGTON, TX 76015
Phone: (817) 258-3000
Fax: (817) 258-3333
mail@martinsprocket.com
www.martinsprocket.com

SEE OUR AD
P31

Master Bond, Inc.
Matrix International
Maurey Manufacturing Corporation
Mayr Corporation
Minsk Gear Works
Motion Industries
Moventas Ltd.
NDE Power Transmissions
Netshape Technologies, Inc.
North American Clutch Corp. (noram)
Novotec Argentina SRL
Nu-Teck Couplings Pvt. Ltd
OEP Couplings, a Division of Oren Elliott Products
Ondrives Ltd
Orttech
PIC Design
PTD Outlet: Power Transmission Distributors
Pacific Industries
Palmer Johnson Power Systems
Paul's Transmission Shenzhen Co.,Ltd
Pix Europe Limited
Pix Transmissions Limited
Popular Mechanical Works
Powermach Import & Export Co. Ltd.

R+W America
1120 TOWER LANE, BENSENVILLE, IL 60106
Phone: (630) 521-9911
Fax: (630) 521-0366
info@rw-america.com
www.rw-america.com

SEE OUR AD
P37

RUBENA a.s.
Rathipolybond Pty Ltd.
René Baer AG
Ringball Corporation
Ringspann Corporation
Rowland Co., The
SIPCO-MLS

SKF USA Inc.
890 FORTY FOOT ROAD, LANSDALE, PA 19446
Phone: (267) 436-6000
www.skf.com

SEE OUR AD
P3

Servometer
Siemens Energy & Automation
Siemens Industry, Inc.
Sprockets Australia Pty. Ltd.

Sterling Instrument
2101 JERICHO TURNPIKE, NEW HYDE PARK, NY 11040
Phone: (516) 328-3300
Fax: (516) 326-8827
sdp-sisupport@sdp-si.com
www.sdp-si.com

SEE OUR AD
BACK COVER
P42,45

SDP Stock Drive Products

Setting Ideas into Motion
Engineered Coupling Solutions



Off-the-shelf
www.sdp-si.com

Designatronics^{inc.}

Stock Drive Products
2101 JERICHO TURNPIKE, NEW HYDE PARK, NY 11040
Phone: (516) 328-3300
Fax: (516) 326-8827
sdp-sisupport@sdp-si.com
www.sdp-si.com

SEE OUR AD
BACK COVER
P35,40

Supreme Gear Co.

T.E.A. Machine Components
 TB Wood's
 TSS Rotterdam B.V.
 TVT America, Inc.
 Taiwan Precision Gear Corp.
 Team Industries
 Timothy Holding Co., Ltd.
 Transply Inc.
 Tristate Bearing & Supply Co. Inc.
 Tsubaki of Canada Limited
 Twiflex Limited
 VL Motion Systems Inc.
 Vision International
 Vision Quality Components, Inc
 WMH Transmissions Ltd
 Wellman Wacoma Limited
 Wittenstein (formerly alpha gear drives)
 Wyko - London & Overseas Supplies
 Xtek, Inc.
 Yogi Bearings
 ZRIME
 Zero-Max
 pylon Gears (Pty) Ltd

FLUID POWER

Acorn Industrial Services
 BDI - Bearing Distributors Inc.
 Brevini Power Transmission - Canada
 CENTA Corp.

Cone Drive

240 EAST 12TH STREET
 TRAVERSE CITY, MI 49685-0272
 Phone: (888) 994-2663
 Fax: (888) 907-2663
 orders@conedrive.com
 www.conedrive.com

SEE OUR AD
P39

Cotta Transmission Co. LLC
 Dalton Bearing Service, Inc.
 Dynex/Rivett Inc.
 Future Technologies, Inc.
 Hayes Manufacturing Inc.
 Helium Leak Testing, Inc.
 Houston Pump and Gear
 Hydraulic Problems ?, Inc.
 IBT, Inc

IDC-USA

933 WESTERN DRIVE, INDIANAPOLIS, IN 46241
 Phone: (317) 244-9200
 Fax: (317) 244-4600
 sswaim@idc-usa.com
 www.IDC-USA.com

SEE OUR AD
P29

K+S Services

KTR Corporation

122 ANCHOR ROAD, MICHIGAN CITY, IN 46360
 Phone: (219) 872-9100
 Fax: (219) 872-9150
 ktr-us@ktr.com
 www.ktr.com

SEE OUR AD
P39,40

Lovejoy, Inc.

MICO, Incorporated
 Motion Industries
 Netshape Technologies, Inc.
 Ngt Specialty Valves

Ningbo Zhongyi Hydraulic Motor Co. Ltd.

NINGBO ZHENHAI ECONOMIC DEVELOPMENT ZONE
 ROAD 88, ITALY
 NINGBO
 CHINA
 Phone: +(86) 574-86261172-800
 Fax: +(86) 574-86288064
 sales@zihyd.com
 www.zihyd.com

SEE OUR AD
P33

OEM International Inc.

Orttech
 Palmer Johnson Power Systems
 Popular Mechanical Works
 RUBENA a.s.

Rowland Co., The
 S.M. Shah & Company
 T.E.A. Machine Components
 TSS Rotterdam B.V.
 TVT America, Inc.
 Var-Spe Variatori Oleodinamici
 Wyko - London & Overseas Supplies
 Zero-Max

GEAR DRIVES

ASI Technologies Inc.
 Accent Bearings Co. Inc.
 Accurate Gear and Machine, Inc.
 Ace World Companies
 Acionac Indústria E Comércio
 Acme Gear Co.
 Acorn Industrial Services
 Aero Gear Inc.
 Agro Engineers
 Akgears, LLC
 Akron Gear and Engineering
 Allen Gears Ltd.
 Allied Motion
 American Gear & Engineering
 American Plastics Depot
 Ametric / American Metric Corporation
 Ancon Gear & Instrument Corp.
 Andantex USA Inc.
 Area Drives Inc.

Arrow Gear Co.

2301 CURTISS STREET
 DOWNERS GROVE, IL 60515
 Phone: (630) 969-7640
 Fax: (630) 969-0253
 quote@arrowgear.com
 www.arrowgear.com

SEE OUR AD
P5

Atlanta Drive Systems Inc.

Atlanta Gear Works, Inc
 Autoparts Solutions PvtLtd
 Avion Technologies Inc.
 B&B Manufacturing, Inc.

B&R Machine and Gear Corp.

4809 U.S. HWY. 45
 SHARON TN 38255
 Phone: (731) 456-2636 or (800) 238-0651
 Fax: (731) 456-3073
 inquiry@brgear.com
 www.brgear.com

SEE OUR AD
P9

BDI - Bearing Distributors Inc.

Baldor Electric Company

5711 R.S. BOREHAM, JR. ST.
 P.O. BOX 2400
 FORT SMITH, AR 72901
 Phone: (479) 646-4711
 Fax: (479) 648-5792
 www.baldor.com

SEE OUR AD
P21

Bauer Gear Motor

Bearing Service Company
 Bevel Gears India Pvt. Ltd.
 Bison Gear and Engineering Corp.
 Bodine Electric Company
 Boneng Transmission (Suzhou) Co., Ltd.
 Boneng Transmission USA LLC
 Bonfiglioli Riduttori S.p.A.
 Bonfiglioli USA
 Boston Gear
 Brad Foote Gear Works, Inc
 Brevini Power Transmission - Canada



brevini
 gear systems

**Established, Tested,
 and Trusted.**

Using technology & innovation to meet
 your needs - now and into the future.

765-759-2128 • info@brevinigeared.com
 brevinigeared.com

Brevini Wind USA

2400 N. PRIORITY WAY
 YORKTOWN, IN 47396
 Phone: (765) 759-2128
 Fax: (765) 759-4728
 dale.harder@brevini.com
 www.breviniwind.com

SEE OUR AD
P16,41,43,44

Broadway Gear

Brother Gearmotors

200 CROSSING BLVD.
 BRIDGEWATER NJ 08807
 Phone: (866) 523-6283
 gearmotors@brother.com
 www.brother-usa.com

SEE OUR AD
P23

Buehler Motor, Inc.

C-B Gear & Machine
 Calicut Engineering Works Limited
 Central Gear & Machine
 Certified Reducer Rebuilders Inc
 Cestari Industrial e Comercial S.A.
 Challenge Power Transmission (Aust) Pty Ltd
 Chenta USA
 Cleveland Gear Co.
 Cogmatic, Inc.
 Columbia Gear Corp.

Cone Drive

240 EAST 12TH STREET
 TRAVERSE CITY, MI 49685-0272
 Phone: (888) 994-2663
 Fax: (888) 907-2663
 orders@conedrive.com
 www.conedrive.com

SEE OUR AD
P39

Cotta Transmission Co. LLC

Currie Enterprises
 Curtis Machine Co. Inc.
 Custom Sensors & Technologies
 Dalton Bearing Service, Inc.
 Danaher Motion and Thomson
 Davall Gears Ltd.
 David Brown
 Delroyd Worm Gear
 Delta Gear Company
 Desch Canada Ltd.

Designatronics, Inc.

2101 JERICHO TURNPIKE, NEW HYDE PARK, NY 11040
 Phone: (516) 328-3300
 Fax: (516) 326-8827
 info@designatronics.com
 www.designatronics.com

SEE OUR AD
 BACK COVER
**P34,35,
 40,42,45**

DieQua Corp.

180 COVINGTON DRIVE, BLOOMINGDALE, IL 60108
 Phone: (630) 980-1133
 Fax: (630) 980-1232
 info@diequa.com
 www.diequa.com

SEE OUR AD
P17

Drive Lines Technologies Ltd

Duff Norton Australia
 Dunkermotoren USA Inc.
 EM Gear / Dae Seong Gear
 Electronic Machine Parts
 Emerson Industrial Automation - Drives & Motor
 Emerson Power Transmission
 Essential Power Transmission Pvt. Ltd.

Excel Gear, Inc.

11865 MAIN STREET, ROSCOE, IL 61073
 Phone: 815-623-3414
 Fax: 815-623-3314
chinn@excelsgear.com
www.excelsgear.com

SEE OUR AD
P22

Plastock - Putnam Precision Molding, Inc.
 Popular Mechanical Works
 Portescap
 Power Engineering and Manufacturing
 Power Transmission Engineers
 Precipart
 Precision Microdrives Limited
 QTC Metric Gears
 Quality Reducer Service
 Quality Transmission Components
 RJ Link International, Inc.
 Renk Test Systems
 Rex Engineering Corp.
 Ringball Corporation
 Rockwell Automation
 Rowland Co., The

SEW-Eurodrive

1295 OLD SPARTANBURG HWY., LYMAN, SC 29635
 Phone: (864) 439-7537
 Fax: (864) 439-7830
www.seweurodrive.com

SEE OUR AD
INSIDE BACK COVER**SIPCO-MLS**

Sallex Machine Tools
 Sam Gears India Pvt.Ltd
 Sesame Motor Corp.
 Setco Precision Spindles, Slides & Service
 Siemens Energy & Automation
 Siemens Industry, Inc.
 Sinotech
 Siti Spa Riduttori
 Sokhi Heli-Wom Gears Pvt. Ltd.
 Source Engineering Inc.
 Spencer Pettus
 Spline Gauges
 Spn Schwaben Praezision
 Star Gears

SEE OUR AD
P29**IDC-USA**

933 WESTERN DRIVE, INDIANAPOLIS, IN 46241
 Phone: (317) 244-9200
 Fax: (317) 244-4600
sswaim@idc-usa.com
www.IDC-USA.com

ITW Heartland
 Industrial Jig & Fixture
 JVL Industri Elektronik A/S
 Jahnelt - Kestermann GmbH & Co. Kg
 K+S Services
 Kamar Industries
 LEESON Electric

Lafert North America

5620 KENNEDY RD.
 MISSISSAUGA ON L4Z 2A9
 CANADA
 Phone: (905) 629-1939 or toll free (800) 661-6413
 Fax: (905) 629-2852
ptsales@lafertna.com
www.lafertna.com

SEE OUR AD
P15

Marswell Engineering Ltd.
 Maxon Precision Motors Inc
 Midwest Gear & Tool, Inc.
 Midwest Motion Products
 Mijno Precision Gearing
 Minsk Gear Works
 Motion Industries
 Moventas Ltd.
 NAC Harmonic Drive
 Niebuhr Gears

Ningbo Zhongyi Hydraulic Motor Co. Ltd.

NINGBO ZHENHAI ECONOMIC DEVELOPMENT ZONE
 ROAD 88, ITALY
 NINGBO
 CHINA
 Phone: +(86) 574-86261172-800
 Fax: +(86) 574-86288064
sales@zihyd.com
www.zihyd.com

SEE OUR AD
P33

Nord Drivesystems
 Norwin Electronics Limited
 Ondrives Ltd
 Onvio LLC
 Ormec
 P. G. DRIVE
 PIC Design
 PTD Outlet: Power Transmission Distributors
 Palmer Johnson Power Systems
 Parker Hannifin Electromechanical Automation Divis
 Performance Gear Systems, Inc.
 Phytion, Inc.

Sterling Instrument

2101 JERICHO TURNPIKE, NEW HYDE PARK, NY 11040
 Phone: (516) 328-3300
 Fax: (516) 326-8827
sdp-sisupport@sdp-si.com
www.sdp-si.com

SEE OUR AD
BACK COVER
P42,45**Stober Drives, Inc.****Stock Drive Products**

2101 JERICHO TURNPIKE, NEW HYDE PARK, NY 11040
 Phone: (516) 328-3300
 Fax: (516) 326-8827
sdp-sisupport@sdp-si.com
www.sdp-si.com

SEE OUR AD
BACK COVER
P35,40

Sumitomo Machinery Corp. of America
 Supreme Gear Co.
 T.E.A. Machine Components
 TVT America, Inc.
 Taiwan Precision Gear Corp.
 Team Industries
 TelcoMotion
 Toledo Gearmotor A Bluffton Motor Works Company
 Tolomatic, Inc.
 Tool Masters India
 Torque Transmission
 Transply Inc.
 Tristate Bearing & Supply Co. Inc.
 Triumph Gear Systems - Acr Industries
 Trojan Gear Inc.
 VL Motion Systems Inc.

Var-Spe Variatori Oleodinamici
 WEG
 WMH Transmissions Ltd
 WPT Power Corporation
 Wittenstein (formerly alpha gear drives)

Worldwide Electric Corp.

1 GROVE ST. #201B
 PITTSFORD, NY 14534
 Phone: (800) 808-2131
 Fax: (800) 711-1616
www.worldwideelectric.net

SEE OUR AD
P34

Wyko - London & Overseas Supplies
 Xtek, Inc.
 Xuzhou BeiLai Engineering Machinery Co., Ltd
 ZRIME
 ZZN Transmission Plant
 Zero-Max
 pylon Gears (Pty) Ltd

GEAR MANUFACTURING SERVICES

ABL Products Incorporated
 ASI Technologies Inc.
 Accent Bearings Co. Inc.
 Accurate Gear and Machine, Inc.
 Ace World Companies
 Acme Gear Co.
 Acorn Industrial Services
 Agro Engineers
 Allen Gears Ltd.
 Allied Gear Co.
 Allied Specialty Precision Inc.
 American Gear & Engineering
 American Gear, Inc.
 American Plastics Depot
 American Swiss Products Co., Inc.
 Ametric / American Metric Corporation
 Ancon Gear & Instrument Corp.
 Ascent Precision Gear Corporation
 Atlanta Gear Works, Inc
 Autoparts Solutions PvtLtd
 Avion Technologies Inc.
 B&B Manufacturing, Inc.

B&R Machine and Gear Corp.

4809 U.S. HWY. 45
 SHARON TN 38255
 Phone: (731) 456-2636 or (800) 238-0651
 Fax: (731) 456-3073
inquiry@brgear.com
www.brgear.com

SEE OUR AD
P9

BC Gear Inc
 BC Manufacturing
 Bearing Service Company
 Beaver Aerospace and Defense Inc.

Beyta Gear Services

ON230 COUNTY FARM ROAD
 WINFIELD, IL 60190
 Phone: (630) 209-1652
chuck@beytagear.com
www.beytagear.com

SEE OUR AD
P88

Bharat Gears Ltd.
 Brelie Gear Company, Inc
 Brevini Power Transmission – Canada



**Established, Tested,
and Trusted.**

*Using technology & innovation to meet
your needs – now and into the future.*

765-759-2128 • info@brevinigeared.com
brevinigeared.com

Brevini Wind USA

2400 N. PRIORITY WAY
YORKTOWN, IN 47396
Phone: (765) 759-2128
Fax: (765) 759-4728
dale.harder@brevini.com
www.breviniwind.com

SEE OUR AD
P16,41,43,44

Broadway Gear
Buffalo Gear, Inc.
Butler Gear
C-B Gear & Machine
Calicut Engineering Works Limited
Carnes-Miller Gear Co., Inc.
Cattini & Figlio S.r.l.
Central Gear & Machine
Certified Reducer Builders Inc
Chenta USA

Circle Gear & Machine Co.

1501 S. 55TH COURT
CICERO, IL 60804
Phone: (708) 652-1000
Fax: (708) 652-1100
cirgeared@circlegear.com
www.circlegear.com

SEE OUR AD
P25

Clark Gear Works, Inc.
Clarke Engineering Inc. (Clarke Gear Co.)
Cleveland Gear Co.
Cloyes Gear & Products Inc.
Cogmatic, Inc.
Columbia Gear Corp.
Commercial Gear & Sprocket Co. Inc.

Cone Drive

240 EAST 12TH STREET
TRAVERSE CITY, MI 49685-0272
Phone: (888) 994-2663
Fax: (888) 907-2663
orders@conedrive.com
www.conedrive.com

SEE OUR AD
P39

Cross + Morse
Curtis Machine Co. Inc.
Custom Machine & Tool Co. Inc.
D G Steel & Son Engineering Ltd.
Dalton Bearing Service, Inc.
Davall Gears Ltd.
David Brown
Delroyd Worm Gear
Delta Gear Company
Delta Gear Corp.

Designatronics, Inc.

2101 JERICHO TURNPIKE, NEW HYDE PARK, NY 11040
Phone: (516) 328-3300
Fax: (516) 326-8827
info@designatronics.com
www.designatronics.com

SEE OUR AD
BACK COVER
**P34,35,
40,42,45**

Drive Lines Technologies Ltd
EM Gear / Dae Seong Gear
Electronic Machine Parts

Excel Gear, Inc.

11865 MAIN STREET, ROSCOE, IL 61073
Phone: 815-623-3414
Fax: 815-623-3314
chinn@excelgear.com
www.excelgear.com

SEE OUR AD
P22

FMC Engineering

Forest City Gear Co.

11715 MAIN STREET
ROSCOE, IL 61073
Phone: (815) 623-2168
Fax: (815) 623-6620
rmikel@fcgear.com
www.fcgear.com

SEE OUR AD
P13

GKN Driveline
GMB Associates
Gajra Gears Pvt. Ltd.
Gayatri Gear Industries
Gear Design & Service Pty. Ltd.
Gear Master Inc.
GearVisions, Inc.
Gleason K2 Plastics
Havlik Gear
Hayes Manufacturing Inc.
Hoffmann Technics Ag
Houston Pump and Gear
IBT, Inc
ITW Heartland
Industrial Jig & Fixture
Jahnel - Kestermann Gmbh & Co. Kg
Kamar Industries
Kinefac Corporation
Kleiss Gears, Inc.
MT Tool & Manufacturing
Magnum Manufacturing
Marswell Engineering Ltd.

Martin Sprocket & Gear

3100 SPROCKET DRIVE, ARLINGTON, TX 76015
Phone: (817) 258-3000
Fax: (817) 258-3333
mail@martinsprocket.com
www.martinsprocket.com

SEE OUR AD
P31

Mijno Precision Gearing
Mini-Broach Machine Company
Minsk Gear Works
Moventas Ltd.
New Allenberry Works (Deepak Industries Ltd.)
Niebuhr Gears
Nissei Corporation of America
Ontario Gear and Spline
Onvio LLC
P. G. DRIVE
PIC Design
PTD Outlet: Power Transmission Distributors
Performance Gear Systems, Inc.
Popular Mechanical Works
Power Engineering and Manufacturing
Pragati Transmission Pvt Ltd
Precipart
Precision Screw Thread
Precision Technologies Group (PTG) Ltd.
Pulley Manufacturers International Inc.
QTC Metric Gears
Quality Reducer Service
RJ Link International, Inc.
Rave Gears LLC
Renk Test Systems
Ronson Gears Pty. Ltd.
Rotek
Rush Gears Inc.
SIPCO-MLS
ST Gear & Machine LLC
Sam Gears India Pvt.Ltd
Schafer Industries
Shivam Autotech Ltd.
Sokhi Heli-Wom Gears Pvt. Ltd.
Spencer Pettus
Spn Schwaben Praezision
Sprockets Australia Pty. Ltd.
Steelmans Broaches Pvt Ltd

Sterling Instrument

2101 JERICHO TURNPIKE, NEW HYDE PARK, NY 11040
Phone: (516) 328-3300
Fax: (516) 326-8827
sdp-sisupport@sdp-si.com
www.sdp-si.com

SEE OUR AD
BACK COVER
P42,45**Stock Drive Products**

2101 JERICHO TURNPIKE, NEW HYDE PARK, NY 11040
Phone: (516) 328-3300
Fax: (516) 326-8827
sdp-sisupport@sdp-si.com
www.sdp-si.com

SEE OUR AD
BACK COVER
P35,40

Suhner Manufacturing Corp.
Supreme Gear Co.
Suzhou Asia Pacific Metal Co., Ltd.
Taiwan Precision Gear Corp.
Team Industries
Toledo Gearmotor A Bluffton Motor Works Company
Tool Masters India
Trojon Gear Inc.
Unigear Industries
VCST LP
VW Broaching Service Inc.
Vision Quality Components, Inc
WEG
WMH Transmissions Ltd
Wyko - London & Overseas Supplies
ZRIME
ZZN Transmission Plant
pylon Gears (Pty) Ltd

GEARS

ABL Products Incorporated
ASI Technologies Inc.
AST Bearings
ATA Gears Ltd.
Accent Bearings Co. Inc.
Accurate Gear and Machine, Inc.
Acme Gear Co.
Aero Gear Inc.
Agro Engineers
Akgears, LLC
Akron Gear and Engineering
Allen Gears Ltd.
Allied Gear Co.
Allied Specialty Precision Inc.
American Gear & Engineering
American Gear, Inc.
American Plastics Depot
American Swiss Products Co., Inc.
Ameridrives Power Transmission
Ametric / American Metric Corporation
Ancon Gear & Instrument Corp.
Andantex USA Inc.
Area Distributors Inc.

Arrow Gear Co.

2301 CURTISS STREET
DOWNERS GROVE, IL 60515
Phone: (630) 969-7640
Fax: (630) 969-0253
quote@arrowgear.com
www.arrowgear.com

SEE OUR AD
P5

Ascent Precision Gear Corporation
Atlanta Drive Systems Inc.
Atlanta Gear Works, Inc
Autoparts Solutions PvtLtd
Avion Technologies Inc.
B&B Manufacturing, Inc.

B&R Machine and Gear Corp.

4809 U.S. HWY. 45
SHARON TN 38255
Phone: (731) 456-2636 or (800) 238-0651
Fax: (731) 456-3073
inquiry@brgear.com
www.brgear.com

SEE OUR AD
P9

BC Gear Inc
BC Manufacturing

BDI - Bearing Distributors Inc.

Baldor Electric Company

5711 R.S. BOREHAM, JR. ST.
P.O. BOX 2400
FORT SMITH, AR 72901
Phone: (479) 646-4711
Fax: (479) 648-5792
www.baldor.com

SEE OUR AD
P21

Bearings Limited

Beaver Aerospace and Defense Inc.

Befared

Beijing THC Limited

Bevel Gears India Pvt. Ltd.

Bharat Gears Ltd.

Bison Gear and Engineering Corp.

Bonfiglioli Riduttori S.p.A.

Boston Gear

Brad Foote Gear Works, Inc

Brelie Gear Company, Inc

Brevini Power Transmission - Canada

Brevini USA



**Established, Tested,
and Trusted.**

*Using technology & innovation to meet
your needs - now and into the future.*

765-759-2128 • info@brevinegear.com

brevinegear.com

Brevini Wind USA

2400 N. PRIORITY WAY
YORKTOWN, IN 47396
Phone: (765) 759-2128
Fax: (765) 759-4728
dale.harder@brevini.com
www.breviniwind.com

SEE OUR AD
P16,41,43,44

Brewer Machine & Gear Co.

Broadway Gear

Brother Gearmotors

200 CROSSING BLVD.
BRIDGEWATER NJ 08807
Phone: (866) 523-6283
gearmotors@brother.com
www.brother-usa.com

SEE OUR AD
P23

Buffalo Gear, Inc.

Butler Gear

C&U Americas, LLC

45901 FIVE MILE ROAD
PLYMOUTH, MI 48170
Phone: (734) 656-0260
Fax: (734) 656-0261
contact@cubearing.com
www.cubearing.com

SEE OUR AD
P32

C-B Gear & Machine

CIMA S.p.A.

Calicut Engineering Works Limited

Capstan Atlantic

Carnes-Miller Gear Co., Inc.

Cattini & Figlio S.r.l.

Central Gear & Machine

Certified Reducer Rebuilders Inc

Chenta USA

Chongqing Rainbow M&E Co.,Ltd

Circle Gear & Machine Co.

1501 S. 55TH COURT
CICERO, IL 60804
Phone: (708) 652-1000
Fax: (708) 652-1100
circular@circlegear.com
www.circlegear.com

SEE OUR AD
P25

Clark Gear Works, Inc.

Clarke Engineering Inc. (Clarke Gear Co.)

Cleveland Gear Co.

Cloyes Gear & Products Inc.

Cogmatic, Inc.

Columbia Gear Corp.

Commercial Gear & Sprocket Co. Inc.

Cone Drive

240 EAST 12TH STREET
TRAVERSE CITY, MI 49685-0272
Phone: (888) 994-2663
Fax: (888) 907-2663
orders@conedrive.com
www.conedrive.com

SEE OUR AD
P39

Cross + Morse

Curtis Machine Co. Inc.

Custom Gear & Machine Inc.

Custom Machine & Tool Co. Inc.

D G Steel & Son Engineering Ltd.

D&D Intl. Corp.

Dalton Bearing Service, Inc.

Davall Gears Ltd.

David Brown

DePe Gear Company Ltd

Delroyd Worm Gear

Delta Gear Company

Delta Gear Corp.

Delta Research Corp.

Designatronics, Inc.

2101 JERICHO TURNPIKE, NEW HYDE PARK, NY 11040
Phone: (516) 328-3300
Fax: (516) 326-8827
info@designatronics.com
www.designatronics.com

SEE OUR AD
BACK COVER
P34,35,
40,42,45

Drive Lines Technologies Ltd

Dunkermotoren USA Inc.

EM Gear / Dae Seong Gear

Electronic Machine Parts

Emerson Power Transmission

Essential Power Transmission Pvt. Ltd.

Excel Gear, Inc.

11865 MAIN STREET, ROSCOE, IL 61073
Phone: 815-623-3414
Fax: 815-623-3314
chinn@excelgear.com
www.excelgear.com

SEE OUR AD
P22

FMC Engineering

First Gear Engineering & Technology

7606 FREEDOM WAY
FORT WAYNE, IN 46818
Phone: (260) 490-3238
Fax: (260) 490-4093
greg@first-gear.com
www.first-gear.com

SEE OUR AD
P11

Forest City Gear Co.

11715 MAIN STREET
ROSCOE, IL 61073
Phone: (815) 623-2168
Fax: (815) 623-6620
rmikel@fcgear.com
www.fcgear.com

SEE OUR AD
P13

Framo Morat Inc.

GKN Driveline

GMB Associates

GMN Bearing Usa, Ltd.

Gajra Gears Pvt. Ltd.

Gayatri Gear Industries

Gear Design & Service Pty. Ltd.

Gear Manufacturing Inc.

Gear Master Inc.

GearVisions, Inc.

Gleason K2 Plastics

Groschopp Inc.

Hangzhou Xingda Machinery Co. Ltd.

Havlik Gear

Hayes Manufacturing Inc.

Henan Contrust Gear Transmission Co., Ltd.

Hoffmann Technics Ag

Houston Pump and Gear

IBT, Inc

IDC-USA

933 WESTERN DRIVE, INDIANAPOLIS, IN 46241
Phone: (317) 244-9200
Fax: (317) 244-4600
sswaim@idc-usa.com
www.IDC-USA.com

SEE OUR AD
P29

IG Watteeuw

ITW Heartland

Industrial Jig & Fixture

Industrial Pulley & Machine Co, Inc.

Intech Corporation

Involute Simulation Software Inc.

JVL Industri Elektronik A/S

Jahnel - Kestermann GmbH & Co. Kg

Kamar Industries

Kaydon Corporation Bearings Division

Kleiss Gears, Inc.

LYC North America Inc

MT Tool & Manufacturing

Magnum Manufacturing

Marswell Engineering Ltd.

Martin Sprocket & Gear

3100 SPROCKET DRIVE, ARLINGTON, TX 76015
Phone: (817) 258-3000
Fax: (817) 258-3333
mail@martinsprocket.com
www.martinsprocket.com

SEE OUR AD
P31

McInnes Rolled Rings

1533 EAST 12TH STREET
ERIE, PA 16511
Phone: (814) 459-4495
Fax: (814) 459-8443
sales@mcrings.com
www.mcinnrolledrings.com

SEE OUR AD
P27

Midwest Gear & Tool, Inc.

Midwest Motion Products

Mijno Precision Gearing

Mini Gears (Stockport) Ltd.

Mini-Broach Machine Company

Minsk Gear Works

Motion Industries

Moventas Ltd.

Netshape Technologies, Inc.

New Allenberry Works (Deepak Industries Ltd.)

Niebuhr Gears

Nisse Corporation of America

Nu-Teck Couplings Pvt. Ltd

Ongears - Ondrives Export Gears

Ontario Gear and Spline

P. G. DRIVE

PIC Design

PTD Outlet: Power Transmission Distributors

Performance Gear Systems, Inc.

Plastock - Putnam Precision Molding, Inc.

Popular Mechanical Works

Portescap

Pragati Transmission Pvt Ltd

Precipart

Precision Screw Thread

Precision Technologies Group (PTG) Ltd.

Pulley Manufacturers International Inc.

QTC Metric Gears

Supplying North America

Modules
0.5-10

Customized Design
www.qtcgears.com



Designatronics inc.

QTC Metric Gears

2101 JERICHO TURNPIKE, NEW HYDE PARK, NY 11040

Phone: (516) 437-6700

Fax: (516) 328-3343

qtcsupport@qtcgears.com

www.qtcgears.com

SEE OUR AD
P45

Quality Bearings & Components

RBI Bearing Inc.

RJ Link International, Inc.

Rave Gears LLC

Ringball Corporation

Ritbearing Corp.

Ronson Gears Pty. Ltd.

Rotek

Rush Gears Inc.

SIPCO-MLS

SKF USA Inc.

890 FORTY FOOT ROAD, LANSDALE, PA 19446

Phone: (267) 436-6000

www.skf.com

SEE OUR AD
P3

ST Gear & Machine LLC

Sallex Machine Tools

Sam Gears India Pvt. Ltd.

Schaeffler Group USA, Inc

308 SPRINGHILL FARM ROAD

FORT MILL, SC 29715

Phone: (803) 548-8500

Fax: (803) 548-8599

www.schaeffler.us

SEE OUR AD
P7

Schafer Industries

Shivam Autotech Ltd.

Sinotech

Siti Spa Riduttori

Sokhi Heli-Wom Gears Pvt. Ltd.

Source Engineering Inc.

South Bend Gear LLC

Spencer Pettus

Spline Gauges

Spn Schwaben Praezision

Sprockets Australia Pty. Ltd.

SI Sterling Instrument

Your Partner in Innovation

Engineered Precision
Gear Solutions

Large Production Capacity

www.sdp-si.com



Designatronics inc.

Sterling Instrument

2101 JERICHO TURNPIKE, NEW HYDE PARK, NY 11040

Phone: (516) 328-3300

Fax: (516) 326-8827

sdp-sisupport@sdp-si.com

www.sdp-si.com

SEE OUR AD
BACK COVER
P42,45

Stock Drive Products

2101 JERICHO TURNPIKE, NEW HYDE PARK, NY 11040

Phone: (516) 328-3300

Fax: (516) 326-8827

sdp-sisupport@sdp-si.com

www.sdp-si.com

SEE OUR AD
BACK COVER
P35,40

Suhner Manufacturing Corp.
Sumitomo Machinery Corp. of America
Supreme Gear Co.
Suzhou Asia Pacific Metal Co., Ltd.
T.E.A. Machine Components
Taiwan Precision Gear Corp.
Team Industries
Toledo Gearmotor A Bluffton Motor Works Company
Tool Masters India
Torque Transmission
Transply Inc.
Tristate Bearing & Supply Co. Inc.
Triumph Gear Systems - Acr Industries
Trojon Gear Inc.
Tsubaki of Canada Limited
Unigear Industries
VCST LP
VW Broaching Service Inc.
Venture Products International
Vision Quality Components, Inc
WMH Transmissions Ltd
Wyko - London & Overseas Supplies
Xtek, Inc.
Yieh Chen Machinery (Six Star Group)
ZRIME
ZZN Transmission Plant
Zero-Max
pylon Gears (Pty) Ltd

INDUSTRIAL HARDWARE AND MACHINE PARTS

All Metric Small Parts (aMsp)

American Plastics Depot

Daemar Inc.

Delta Gear Company

Designatronics, Inc.

2101 JERICHO TURNPIKE, NEW HYDE PARK, NY 11040

Phone: (516) 328-3300

Fax: (516) 326-8827

info@designatronics.com

www.designatronics.com

SEE OUR AD
BACK COVER
P34,35,
40,42,45

Gear Master Inc.

Hi-Grade Inc.

Houston Pump and Gear

Martin Sprocket & Gear

3100 SPROCKET DRIVE, ARLINGTON, TX 76015

Phone: (817) 258-3000

Fax: (817) 258-3333

mail@martinsprocket.com

www.martinsprocket.com

SEE OUR AD
P31

Motion Industries

Netshape Technologies, Inc.

Powermach Import & Export Co.,Ltd

Premier Udyog

SKG Enterprises

Sterling Instrument

2101 JERICHO TURNPIKE, NEW HYDE PARK, NY 11040

Phone: (516) 328-3300

Fax: (516) 326-8827

sdp-sisupport@sdp-si.com

www.sdp-si.com

SEE OUR AD
BACK COVER
P42,45

Stock Drive Products

2101 JERICHO TURNPIKE, NEW HYDE PARK, NY 11040

Phone: (516) 328-3300

Fax: (516) 326-8827

sdp-sisupport@sdp-si.com

www.sdp-si.com

SEE OUR AD
BACK COVER
P35,40

LINEAR MOTION DEVICES

AGI Automation Components

AISCO Industrial Couplings

AST Bearings

Accent Bearings Co. Inc.

Acorn Industrial Services

Advanced Control Systems Corporation

Aerotech Inc.

Amacoil, Inc.

Ametric / American Metric Corporation

Andantex USA Inc.

Area Distributors Inc.

Atlanta Drive Systems Inc.

BDI - Bearing Distributors Inc.

Baldor Electric Company

5711 R.S. BOREHAM, JR. ST.

P.O. BOX 2400

FORT SMITH, AR 72901

Phone: (479) 646-4711

Fax: (479) 648-5792

www.baldor.com

SEE OUR AD
P21

Beaver Aerospace and Defense Inc.

Bishop-Wisecarver Corp.

CUI Inc

Certified Reducer Rebuilders Inc

Clarke Engineering Inc. (Clarke Gear Co.)

Custom Gear & Machine Inc.

Custom Sensors & Technologies

Dalton Bearing Service, Inc.

Danaher Motion and Thomson

Davall Gears Ltd.

David Brown

Del-Tron Precision Inc.

Designatronics, Inc.

2101 JERICHO TURNPIKE, NEW HYDE PARK, NY 11040

Phone: (516) 328-3300

Fax: (516) 326-8827

info@designatronics.com

www.designatronics.com

SEE OUR AD
BACK COVER
P34,35,
40,42,45

DieQua Corp.

180 COVINGTON DRIVE, BLOOMINGDALE, IL 60108

Phone: (630) 980-1133

Fax: (630) 980-1232

info@diequa.com

www.diequa.com

SEE OUR AD
P17

Discovery Technology International, Inc.

Dn Sales Australia

Drive Lines Technologies Ltd

Duff Norton Australia

Dunkermotoren USA Inc.

Durabond Slides

Dynamic Structures and Materials, LLC

Dynex/Rivett Inc.

Emerson Industrial Automation - Drives & Motor

Exlar Corporation

FMC Engineering

Festo Corporation

Framo Morat Inc.

HPB Motion Control Co. Ltd.

Hallmark Industries Inc.

Houston Pump and Gear

IAI America, Inc.

IBT, Inc

IDC-USA

933 WESTERN DRIVE, INDIANAPOLIS, IN 46241

Phone: (317) 244-9200

Fax: (317) 244-4600

sswaim@idc-usa.com

www.IDC-USA.com

SEE OUR AD
P29

Industrial Clutch Parts Ltd.

Intellidrives, Inc

International Distribution Alliance, Inc. (IDA, In

InvenSense

K+S Services

LEESON Electric

Mavilor Motors, S.a.

Midwest Motion Products

Mitsubishi Electric Automation, Inc.

Modern Linear Inc.

Motion Industries

North American Clutch Corp. (noram)

Novotec Argentina SRL

Ondrives Ltd

Ormec

Orttech
PI (Physik Instrumente) L.P. Piezo Actuator Nano
PIC Design
PTD Outlet: Power Transmission Distributors
Parker Hannifin Electromechanical Automation Divis
Performance Gear Systems, Inc.
Phytron, Inc.
Portescap
Precipart
Precision Screw Thread
Precision Technologies Group (PTG) Ltd.
Rex Engineering Corp.
Ringball Corporation
Rockwell Automation
Rowland Co., The

SEW-Eurodrive

1295 OLD SPARTANBURG HWY., LYMAN, SC 29635
Phone: (864) 439-7537
Fax: (864) 439-7830
www.seweurodrive.com

SEE OUR AD
INSIDE BACK COVER**SIPCO-MLS****SKF USA Inc.**

890 FORTY FOOT ROAD, LANSDALE, PA 19446
Phone: (267) 436-6000
www.skf.com

SEE OUR AD
P3**Schaeffler Group USA, Inc**

308 SPRINGHILL FARM ROAD
FORT MILL, SC 29715
Phone: (803) 548-8500
Fax: (803) 548-8599
www.schaeffler.us

SEE OUR AD
P7**Serapid Inc.****Servometer****Sesame Motor Corp.****Siemens Industry, Inc.****Specialty Motions, Inc.****Spn Schwaben Praezision****Steinmeyer Inc.****Sterling Instrument**

2101 JERICHO TURNPIKE, NEW HYDE PARK, NY 11040
Phone: (516) 328-3300
Fax: (516) 326-8827
sdp-sisupport@sdp-si.com
www.sdp-si.com

SEE OUR AD
BACK COVER
P42,45**Stock Drive Products**

2101 JERICHO TURNPIKE, NEW HYDE PARK, NY 11040
Phone: (516) 328-3300
Fax: (516) 326-8827
sdp-sisupport@sdp-si.com
www.sdp-si.com

SEE OUR AD
BACK COVER
P35,40**T.E.A. Machine Components****Technico****Tecnotion BV****TelcoMotion****Tolomatic, Inc.****Tristate Bearing & Supply Co. Inc.****VL Motion Systems Inc.****WEG****WMH Transmissions Ltd****Warner Linear****Whittet-Higgins Company****Wittenstein (formerly alpha gear drives)****Wyko - London & Overseas Supplies****Yaskawa America, Inc.**

DRIVES & MOTORS DIVISION
2121 NORMAN DRIVE SOUTH
WAUKEGAN, IL 60085
Phone: (800) 927-5292
Fax: (847) 887-7310
tom_kutcher@yaskawa.com
www.yaskawa.com

SEE OUR AD
P19**LUBRICATION****Acorn Industrial Services****Daubert Cromwell LLC****Hydraulic Problems?, Inc.****Isel Inc.****SKF USA Inc.**

890 FORTY FOOT ROAD, LANSDALE, PA 19446
Phone: (267) 436-6000
www.skf.com

SEE OUR AD
P3**Schaeffler Group USA, Inc**

308 SPRINGHILL FARM ROAD
FORT MILL, SC 29715
Phone: (803) 548-8500
Fax: (803) 548-8599
www.schaeffler.us

SEE OUR AD
P7**Tristate Bearing & Supply Co. Inc.****MATERIALS****McInnes Rolled Rings**

1533 EAST 12TH STREET
ERIE, PA 16511
Phone: (814) 459-4495
Fax: (814) 459-8443
sales@mcrings.com
www.mcinnrolledrings.com

SEE OUR AD
P27**MOTORS****ASI Technologies Inc.****Accent Bearings Co. Inc.****Acorn Industrial Services****Advanced Control Systems Corporation****Aerotech Inc.****Allied Motion****Ametric / American Metric Corporation****Arc Systems, Inc****Area Distributors Inc.****Automation Direct**

3505 HUTCHINSON ROAD, CUMMING, GA 30040
Phone: (800) 633-0405
Fax: (770) 844-4212
sales@automationdirect.com
www.automationdirect.com

SEE OUR AD
INSIDE FRONT COVER**BDI - Bearing Distributors Inc.****Baldor Electric Company**

5711 R.S. BOREHAM, JR. ST.
P.O. BOX 2400
FORT SMITH, AR 72901
Phone: (479) 646-4711
Fax: (479) 648-5792
www.baldor.com

SEE OUR AD
P21**Bison Gear and Engineering Corp.****Bodine Electric Company****Bonfiglioli Riduttori S.p.A.****Bonfiglioli USA****Boston Gear****Buehler Motor, Inc.****Cone Drive**

240 EAST 12TH STREET
TRAVERSE CITY, MI 49685-0272
Phone: (888) 994-2663
Fax: (888) 907-2663
orders@conedrive.com
www.conedrive.com

SEE OUR AD
P39**Conroll Corporation****Custom Motors Inc.****Custom Sensors & Technologies****Cutes Corporation****D&D Intl. Corp.****Dalton Bearing Service, Inc.****Danaher Motion and Thomson****Davall Gears Ltd.****David Brown****Designatronics, Inc.**

2101 JERICHO TURNPIKE, NEW HYDE PARK, NY 11040
Phone: (516) 328-3300
Fax: (516) 326-8827
info@designatronics.com
www.designatronics.com

SEE OUR AD
BACK COVER
P34,35,
40,42,45**DieQua Corp.**

180 COVINGTON DRIVE, BLOOMINGDALE, IL 60108
Phone: (630) 980-1133
Fax: (630) 980-1232
info@diequa.com
www.diequa.com

SEE OUR AD
P17**Discovery Technology International, Inc.****Drive Lines Technologies Ltd****Duff Norton Australia****Dunkermotoren USA Inc.****Dynex/Rivett Inc.****Electro Static Technology****Electronic Machine Parts****Elektrim Motors****Emerson Industrial Automation - Drives & Motor****Emerson Power Transmission****Exlar Corporation****Festo Corporation****GMB Associates****Groschopp Inc.****HPB Motion Control Co. Ltd.****Hallmark Industries Inc.****Hansen Motor Corporation****Hoffmann Technics Ag****IBT, Inc****IDC-USA**

933 WESTERN DRIVE, INDIANAPOLIS, IN 46241
Phone: (317) 244-9200
Fax: (317) 244-4600
sswaim@idc-usa.com
www.IDC-USA.com

SEE OUR AD
P29**Intellidrives, Inc****JVL Industri Elektronik A/S****K+S Services****LEESON Electric****Lafert North America**

5620 KENNEDY RD.
MISSISSAUGA ON L4Z 2A9
CANADA
Phone: (905) 629-1939 or toll free (800) 661-6413
Fax: (905) 629-2852
ptsales@lafertna.com
www.lafertna.com

SEE OUR AD
P15**MT Tool & Manufacturing****Mark Elektriks****Mavilor Motors, S.a.****Maxon Precision Motors Inc****Midwest Motion Products****Mitsubishi Electric Automation, Inc.****Motion Industries****Navyug Electric Motors & Pumps Ltd****New Power Electric (USA) LLC****Norwin Electronics Limited****Novotec Argentina SRL****Onvio LLC****OrmeC****PI (Physik Instrumente) L.P. Piezo Actuator Nano****PTD Outlet: Power Transmission Distributors****Parker Hannifin - SSD Drives Div.****Parker Hannifin Electromechanical Automation Divis****Performance Gear Systems, Inc.****Phytron, Inc.****Popular Mechanical Works****Portescap****Precision Microdrives Limited****Rex Engineering Corp.****Rockwell Automation****SEW-Eurodrive**

1295 OLD SPARTANBURG HWY., LYMAN, SC 29635
Phone: (864) 439-7537
Fax: (864) 439-7830
www.seweurodrive.com

SEE OUR AD
INSIDE BACK COVER**SIPCO-MLS****SKF USA Inc.**

890 FORTY FOOT ROAD, LANSDALE, PA 19446
Phone: (267) 436-6000
www.skf.com

SEE OUR AD
P3

Schaeffler Group USA, Inc

308 SPRINGHILL FARM ROAD
FORT MILL, SC 29715
Phone: (803) 548-8500
Fax: (803) 548-8599
www.schaeffler.us

SEE OUR AD
P7**Schneider Electric Motion Competency Center**

Sesame Motor Corp.
Siemens Energy & Automation
Siemens Industry, Inc.
Sinotech
Siti Spa Riduttori
Source Engineering Inc.
Star Gears

Stock Drive Products

2101 JERICHO TURNPIKE, NEW HYDE PARK, NY 11040
Phone: (516) 328-3300
Fax: (516) 326-8827
sdp-sisupport@sdp-si.com
www.sdp-si.com

SEE OUR AD
BACK COVER
P35,40**Sumitomo Machinery Corp. of America**

TSS Rotterdam B.V.
TVT America, Inc.
Taiwan Precision Gear Corp.
Tecnotion BV
Teco Westinghouse
Tef - Cap Industries
TelcoMotion
Tolomatic, Inc.
Transply Inc.
VL Motion Systems Inc.
WEG
Wittenstein (formerly alpha gear drives)

Worldwide Electric Corp.

1 GROVE ST. #201B
PITTSFORD, NY 14534
Phone: (800) 808-2131
Fax: (800) 711-1616
www.worldwideelectric.net

SEE OUR AD
P34**Wyko - London & Overseas Supplies****Yaskawa America, Inc.**

DRIVES & MOTORS DIVISION
2121 NORMAN DRIVE SOUTH
WAUKEGAN, IL 60085
Phone: (800) 927-5292
Fax: (847) 887-7310
tom_kutcher@yaskawa.com
www.yaskawa.com

SEE OUR AD
P19**RESOURCES****AGMA**

Beyta Gear Services

Deutsche Messe AG

MESSEGELÄNDE
30521 HANNOVER
GERMANY
Phone: +(49) 511-89-0
Fax: +(49) 511-89-32626
www.messe.de

SEE OUR AD
P77

Randall Publications LLC

SEALS

Accent Bearings Co. Inc.
Acorn Industrial Services
All Metric Small Parts (aMsp)
Ametric / American Metric Corporation
Area Distributors Inc.
BDI - Bearing Distributors Inc.
Bearing Service Company
Centritec Seals, LLC
Certified Reducer Rebuilders Inc
Core Supply LLC
Dalton Bearing Service, Inc.
Darbar Belting
GMN Bearing Usa, Ltd.
Houston Pump and Gear
IBT, Inc

IDC-USA

933 WESTERN DRIVE, INDIANAPOLIS, IN 46241
Phone: (317) 244-9200
Fax: (317) 244-4600
sswaim@idc-usa.com
www.IDC-USA.com

SEE OUR AD
P29**MROSupply**

Motion Industries
Moventas Ltd.
PTD Outlet: Power Transmission Distributors
RUBENA a.s.

SKF USA Inc.

890 FORTY FOOT ROAD, LANSDALE, PA 19446
Phone: (267) 436-6000
www.skf.com

SEE OUR AD
P3**Smalley Steel Ring Company**

555 OAKWOOD ROAD, LAKE ZURICH, IL 60047
Phone: (847) 719-5900
Fax: (847) 719-5999
info@smalley.com
www.smalley.com

SEE OUR AD
P26

Wyko - London & Overseas Supplies
Zerelli Technologies Inc

SENSORS

Acorn Industrial Services
AeroScout Industrial
Akron Gear and Engineering
Allied Motion
Area Distributors Inc.

Automation Direct

3505 HUTCHINSON ROAD, CUMMING, GA 30040
Phone: (800) 633-0405
Fax: (770) 844-4212
sales@automationdirect.com
www.automationdirect.com

SEE OUR AD
INSIDE FRONT COVER**Axu S.r.l.**

BDI - Bearing Distributors Inc.
BEI Industrial Encoders
Binsfeld Engineering Inc.
Bison Gear and Engineering Corp.
CUI Inc
Conroll Corporation
Custom Sensors & Technologies
Dalton Bearing Service, Inc.
Drive Lines Technologies Ltd
Duff Norton Australia
Dunkermotoren USA Inc.
Electronic Machine Parts
FSI Technologies Inc.
Fagor Automation
Festo Corporation
Fife Corporation
GMB Associates
GP:50 Corporation
Great Northern Products Inc.
HBM
HEIDENHAIN Corporation
HPB Motion Control Co. Ltd.
IBT, Inc

IDC-USA

933 WESTERN DRIVE, INDIANAPOLIS, IN 46241
Phone: (317) 244-9200
Fax: (317) 244-4600
sswaim@idc-usa.com
www.IDC-USA.com

SEE OUR AD
P29

Industrial Clutch Parts Ltd.
Intellidrives, Inc
InvenSense
JVL Industri Elektronik A/S
K+S Services
Kavlico Corporation
Magtrol, Inc.
Marshall Wolf Automation Inc.
Maxon Precision Motors Inc
Mayr Corporation

Microtron Inc.

Midwest Motion Products
Motion Industries
Norwin Electronics Limited
Novotec Argentina SRL
PI (Physik Instrumente) L.P. Piezo Actuator Nano
Portescap
Potomac Electric
Precipart
Rdf Corporation
Rockwell Automation
Rowland Co., The

SKF USA Inc.

890 FORTY FOOT ROAD, LANSDALE, PA 19446
Phone: (267) 436-6000
www.skf.com

SEE OUR AD
P3**Schenck Trebel Corporation**

Sensor Developments, Inc
Sensor Products Inc.
Sensor Technology Ltd
Sinotech
Source Engineering Inc.
Stellar Technology, Inc.
Tef - Cap Industries
Transply Inc.
Wyko - London & Overseas Supplies
Xtek, Inc.

SOFTWARE**Excel Gear, Inc.**

11865 MAIN STREET, ROSCOE, IL 61073
Phone: 815-623-3414
Fax: 815-623-3314
chinn@excelgear.com
www.excelgear.com

SEE OUR AD
P22**Inolute Simulation Software Inc.**

Mark Elektriks
ZRIME