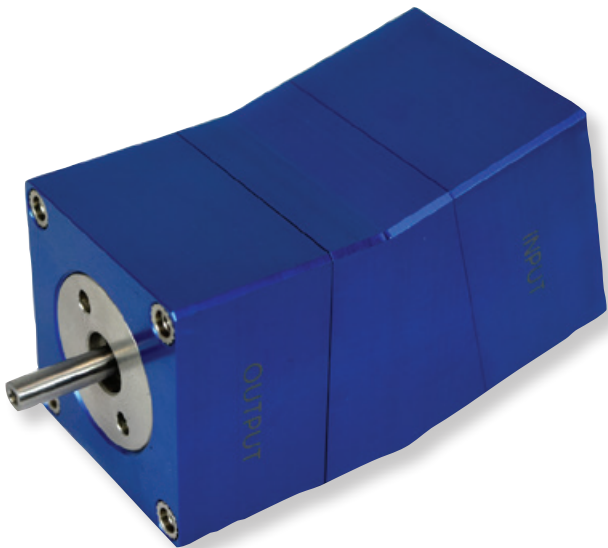


Stock Drive Products/Sterling Instrument

Engineered Mechanical Solutions

Stock Drive Products/Sterling Instrument (SDP/SI) manufactures mechanical components for varied product applications. Our precision gears, machined parts, molded components, and drive assemblies can be found in high-tech operating rooms, movie sets, military operations, space exploration, and even on Mars. Partnering with OEMs around the world we manufacture and manage supply chain of components required for medical, surgical robotics, aviation, satellites, defense, automation, and commercial industries. SDP/SI sets ideas into motion.

Established in 1950, SDP/SI provides exceptional services, inch and metric component choices, and design solutions. Completed December 2016, our 96,000 square foot state-of-the-art Hicksville, NY facility houses the latest manufacturing, industrial automation, and inspection equipment. Employing skilled machinists, CNC programmers, inspectors, engineers, and customer service personnel, we meet the highest-quality standards your business deserves. Standard catalog components can be found and purchased online where free 3D CAD models and part specifications can be easily downloaded.



Facing a design challenge? SDP/SI supports many Fortune 500 companies in new and exciting projects. Applying years of experience, product knowledge, and design acumen our engineering and manufacturing teams provide innovative solutions through part selection, modifications, or custom design. Sometimes the best solution is the simplest. Standard components are a cost-effective option and with 87,000 inch and metric, machined and molded components offered, SDP/SI is the engineers preferred source.



- Timing Belts and Pulleys
- Precision Gears
- Precision Gearboxes
- Bearings
- Couplings
- Hardware
- Precision Machined Components
- Molded Components
- Mechanical Assemblies
- Contract Manufacturing

With the focus on our customers, SDP/SI recently acquired a 3D printer. Primarily used for prototypes and low volume production, our customers are already benefiting. Printing high-quality components and assemblies, we are getting their designs into production faster.

Our manufacturing capabilities include precision gear cutting, 5-axis milling, 9-axis Swiss turning, and world class quality. Custom material and finish options are available. For prototypes to large scale production, see what SDP/SI can do for you. ISO 9001:2015 + AS9100D certified, ITAR, Reach, and RoHS compliant.

SDP/SI is an award winning company located on Long Island, New York.

SDP/SI
STOCK DRIVE PRODUCTS/STERLING INSTRUMENT

FOR MORE INFORMATION

250 Duffy Avenue, Hicksville, New York 11801

Phone: 516-328-3300

Toll Free: 800-819-8900

Fax: 516-326-8827

Email: sdp-sisupport@sdp-si.com

www.sdp-si.com