

# Stock Drive Products/ Sterling Instrument

## Precision CNC Machined Components

### Stock Drive Products/Sterling Instrument (SDP/SI) manufactures small mechanical components for all applications.

Our precision gears, machined parts, molded components, and drive assemblies can be found in high-tech operating rooms, movie sets, military operations, space exploration, and even on Mars. Partnering with OEMs around the world we manufacture and manage supply chain of components required for medical, surgical robotics, aviation, satellites, defense, automation, and commercial industries.

Established in 1950, SDP/SI designs, manufactures and builds custom subassemblies with world-class quality and reliability for all applications. Completed December 2016, our 96,000 square foot state-of-the-art Hicksville, NY facility houses the latest manufacturing, industrial automation, and inspection equipment. Employing skilled machinists, CNC programmers, inspectors, engineers, and customer service personnel, we meet the highest-quality standards your business deserves.

Facing a design challenge? SDP/SI supports many Fortune 500 companies in new and exciting projects. Applying years of experience, product knowledge, and design acumen our engineering and manufacturing teams provide innovative solutions through part selection, modifications, or custom design. Sometimes the best solution is the simplest. Standard components are a cost-effective option and with 87,000 machined and molded components offered, SDP/SI is the engineers preferred source.



- Timing Belts and Pulleys
- Precision Gears
- Precision Gearboxes
- Bearings
- Couplings
- Hardware
- Precision Machined Components
- Molded Components
- Mechanical Assemblies
- Contract Manufacturing

SDP/SI has the ability to provide custom gear and mechanical component manufacturing services to a wide variety of OEMs, producing high-quality gears and complex gear assemblies for the most recognized names in medical, aerospace and robotics. As a precision gear and small mechanical component manufacturer we excel in every process; milling, turning, grinding, drilling, gear cutting, and assembly. We machine in a variety of materials including stainless steel, aluminum, plastic, brass, bronze, steel alloys, and titanium. NADCAP and customer approved facilities are used for finishing and surface treatments. ISO 9001:2015 + AS9100D certified, ITAR, Reach, and RoHS compliant.

We look forward to working with you!

# SDP/SI

STOCK DRIVE PRODUCTS/STERLING INSTRUMENT

#### FOR MORE INFORMATION

250 Duffy Avenue, Hicksville, New York 11801

Phone: 516-328-3300

Toll Free: 800-819-8900

Fax: 516-326-8827

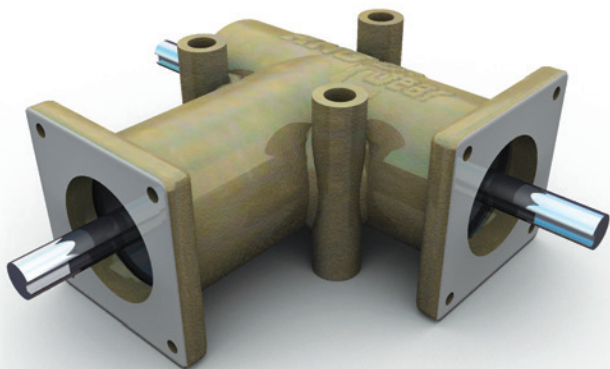
Email: [sdp-sisupport@sdp-si.com](mailto:sdp-sisupport@sdp-si.com)

[www.sdp-si.com](http://www.sdp-si.com)

# Andantex USA

## Anglgear™: Made in the USA, Powering Industry Worldwide

**Andantex USA's objective over the years has always remained the same: to provide innovative, high-quality gearboxes and solutions for use on industrial machinery.** The Anglgear™ right angle drive is an example of our commitment to our customers' needs and applications. Since purchasing this product line more than 30 years ago, the Anglgear™ has grown into a product that is now used in various applications across the printing, converting, packaging, general purpose and aerospace industries.



In addition, we also supply all branches of the military, conforming to contracts specifying various MIL SPEC requirements.

The Anglgear™ line consists of 14 different models available from stock in both an Inch and Metric series and sold worldwide. ***We take pride in the fact that all Anglgear™ drives are assembled and shipped from our headquarters in New Jersey. Here, we manufacture, and inspect every unit that goes out the door. This ensures consistent quality in all our gearboxes.***

Our standard units are available from stock in 1:1 and 2:1 ratios, with 2 shafts or 3, 2 flanged or 3 flanged units, and are lubricated for life before being shipped.

Over the past 10 years, we have seen that a huge part of our growth in this line is due to the fact that we will modify our units to meet our customers' design specifications. **It doesn't matter if it's a one-piece special order or a quantity order;** our engineers will work with our customers to give them the best solution for their application and needs.

Examples of our modifications include various shaft lengths and configurations, including shafts with flats, splines, holes, etc. We also offer 3-way units with counter-rotating output shafts, as well as custom housings with flanges and bosses removed for custom mounting applications, special materials, bearings, seals and epoxy coatings as needed. We can provide units with special backlash upon request, and offer various options for grease including food grade, high temperature and radiation resistant.



# ANDANTEX USA Inc.

### FOR MORE INFORMATION

1705 Valley Road, Ocean Township, New Jersey 07712

Phone: 877-966-9151 (732-493-2812)

Fax: 732-493-2949

Email: [info@andantex.com](mailto:info@andantex.com)

[www.andantex.com](http://www.andantex.com)

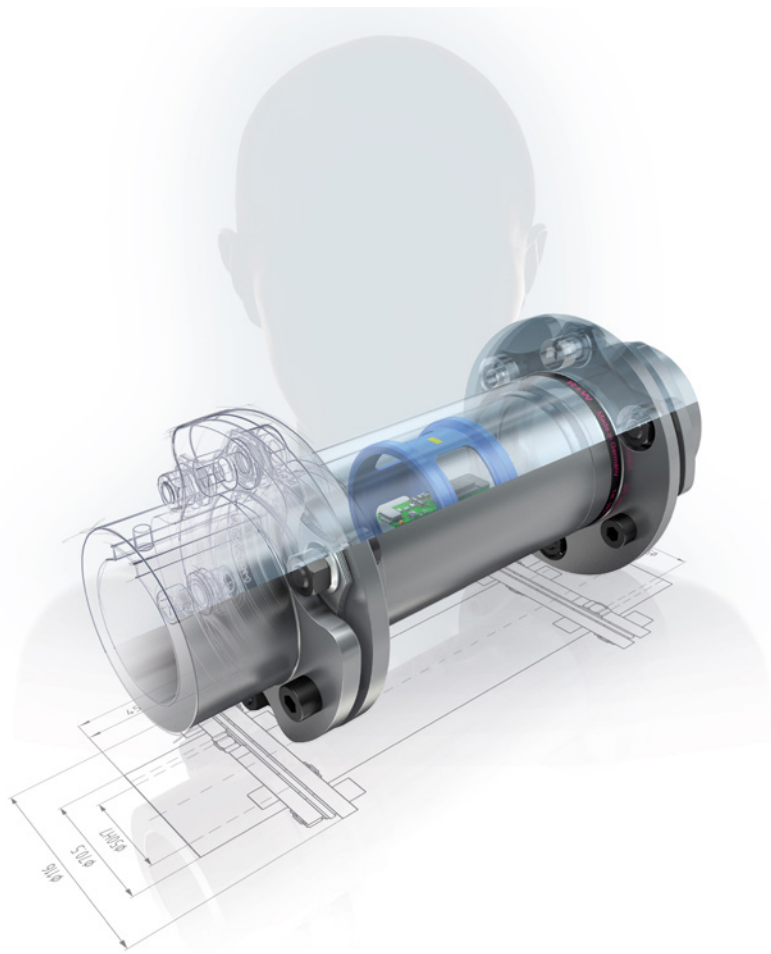
# R+W Coupling Technology

## Connection Elements of the Future

**R+W** has always stayed in the forefront of breakthrough coupling technology and does its best to exceed customer's requirements and expectations. An ever-expanding product line helps them design the most optimal solution for nearly every application in any industry. Recently, they have taken their first step towards building the coupling of the future.

A new intelligent coupling system from R+W provides wireless transmission of torque, speed, vibration, and axial load data in near real time to an app or gateway for integration into control systems for user monitoring. This development is significant because actual application torques cannot be accurately monitored by motor drives, historically leaving users to either guess or to build external sensors into the driveline. This adds significant cost and is not always possible due to space constraints. The coupling system comes with a user-friendly app which not only displays average, minimum, and maximum values, but also provides the ability to overlay charts in real time to help identify correlations. Rechargeable batteries are used in the first-generation design, but developments for an inductive power supply are currently underway which will facilitate uninterrupted data transmission.

Over the past 30 years, R+W has established itself as a precision coupling expert. With these intelligent couplings, they plan on providing more useful data to machine builders and enable them to optimize their driveline design, run condition monitoring, and plan predictive maintenance activities. Customer's demands and requirements are always a top priority, and a team of engineers is standing by to assist you with customized solutions for complex coupling applications. Find out what the coupling technology leads can do for you and get the best connection, worldwide.



**R+W**®  
A POPPE + POTTHOFF COMPANY

**FOR MORE INFORMATION**  
254 Tubeway Drive, Carol Stream, IL 60188

Phone: 630-521-9911  
Fax: 630-521-0366

Email: [info@rw-america.com](mailto:info@rw-america.com)

[www.rw-america.com](http://www.rw-america.com)

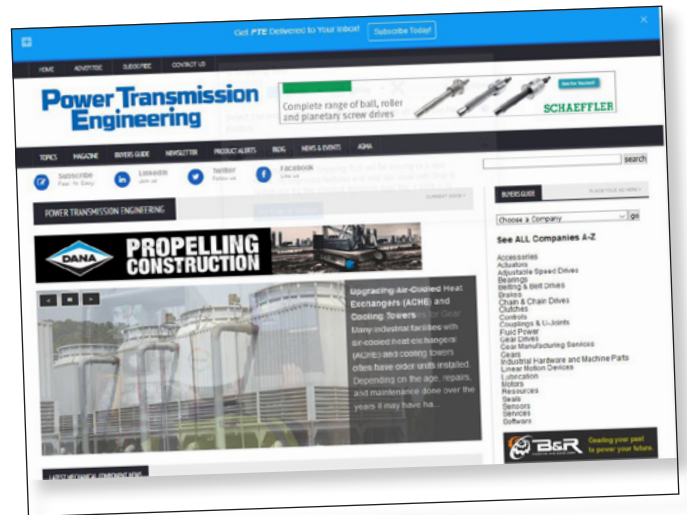
# Power Transmission Engineering

Free Knowledge Served Daily

For even more great information on couplings, including technical articles, features and insight from the leading manufacturers, case studies and application examples, visit the *Power Transmission Engineering* archive.

[www.powertransmission.com/subjects/couplings/](http://www.powertransmission.com/subjects/couplings/)

But don't stop there! Just type what you're looking for into our search box at the top-right of any page, and you'll find just as much great information from our archives on virtually any topic related to mechanical power transmission and motion control, whether it's gears, bearings, motors, clutches, chain, gearboxes and more.



## Power Transmission Engineering

**FOR MORE INFORMATION**  
1840 Jarvis Avenue, Elk Grove Village, IL 60007  
Phone: 847-437-6604  
Fax: 847-437-6618  
Email: [publisher@powertransmission.com](mailto:publisher@powertransmission.com)  
[www.powertransmission.com](http://www.powertransmission.com)

## Zero-Max, Inc.

**Innovative Motion Control Products**

For nearly 70-years, **Zero-Max, Inc.** has created innovative motion and control technologies such as **servo-rated shaft couplings, adjustable speed drives and keyless shaft bushings.**

We have an international reputation for innovative designs that provide the quality, durability and performance required for demanding applications. Our high precision engineered solutions are used in automation machines world-wide including packaging, printing, CNC machine tools, wind turbines, forestry and construction equipment, servo motor driven machines, and more.

With strategic distribution points located throughout the world, Zero-Max can deliver your motion control solution. Whether you need a SAE mount or non-SAE mount overhung load adaptor or a counter-rotating gearbox, our team of application specialists can engineer a solution to meet your motion control requirements.



**ZERO-MAX**

**FOR MORE INFORMATION**  
13200 Sixth Avenue North Plymouth, MN 55441-5509  
Phone: 763-546-4300  
[www.zero-max.com](http://www.zero-max.com)